

WorkerPro

Europe

Last modified:

14.01.2021 – slides 2-10 new stretch, slides 493-506 ESD updates (short coat for men & women added)



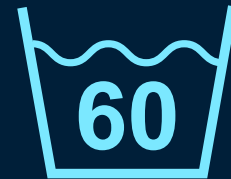
**Protect
your
work**

WorkerPro Stretch

Modern fit stretch trousers and jackets, made from light weight and comfortable stretch materials suitable for industrial washing.

The design is inspired by technical look and active outdoor lifestyle.





Max washing temperature!

Comfort & Durability

Pro Stretch 210 is an industrially launderable 2-way stretch fabric for optimal comfort in wear. This blend of polyester with branded LYCRA® and COOLMAX® technology offers high abrasion properties for demanding end uses, combined with optimum stretch, moisture management and wicking performance.

This fabric is primarily designed for trousers or jackets used in highly mobile end uses, giving the wearer maximum comfort.

Composition:
68% Polyester / 32% Elastomultiester, 210 gsm

Colors: black, hiviis yellow



Stretch panel material is a 2-way hi-stretch quality, that feels soft and comfortable next to the skin.

This material is typically used in those garment areas where maximum mobility is needed.

Composition:
91% Polyamid / 9% Elastane, 250 gsm

Colors: black (this fabric is always black)



Attention: No Tunnel dry

Cordura fabrics are durable and resistant to abrasions, tears and scuffs. They are ideal fabric to be used for outer knee pockets and next to trouser leg ends.

We are using a similar material type as Cordura, and we have not made any compromise in the fabric quality.

Composition:
100% Polyamid, 210 gsm

Colors: black (this fabric is always black)



Attention: No Tunnel dry

Stretch trousers

Main colors:
Black

CRM Collection:
WorkerPro

CRM Material:
Pro Stretch 210

Planned Collection:
Ready for Sales

Photo availability:
Will follow.

Stretch trousers, slim fit

Main material: 68% Polyester / 32% Elastomultiester, 210gsm
Stretch details: 91% Polyamide / 9% Elastane, 250 gsm

Slim fit stretch trousers with comfortable stretch panel details. Two leg pockets with flap covers and hidden press button closure. Additional small gadget pocket on right side, and detachable ID card holder on left. Elastic band inside waist that can be adjusted on both sides for comfortable waist width. Shaped knees. Reflective band on both legs. Elastic band and velcro adjustment at leg opening.



1F0403 TIM (men)
Size assortment: 42-66



1F0631 TIA (women)
Size assortment: 32-56

Stretch trousers with knee pockets

Main material: 68% Polyester / 32% Elastomultiester, 210gsm
Stretch details: 91% Polyamide / 9% Elastane, 250 gsm
Knee pockets: Cordura 100% Polyamide, 220 gsm

Stretch trousers with comfortable stretch panel details and Cordura knee pockets. Two leg pockets with flap covers and hidden press button closure. Additional small gadget pocket on right side, and detachable ID card holder on left. Elastic band inside waist that can be adjusted on both sides for comfortable waist width. Shaped knees. Reflective band on both legs. Elastic band and velcro adjustment at leg opening. Cordura knee pockets outside.



1F0404 TINO (men)
Size assortment: 42-66



1F0632 TINA (women)
Size assortment: 32-56

Stretch jackets

Main colors:
Black

CRM Collection:
WorkerPro

CRM Material:
Pro Stretch 210

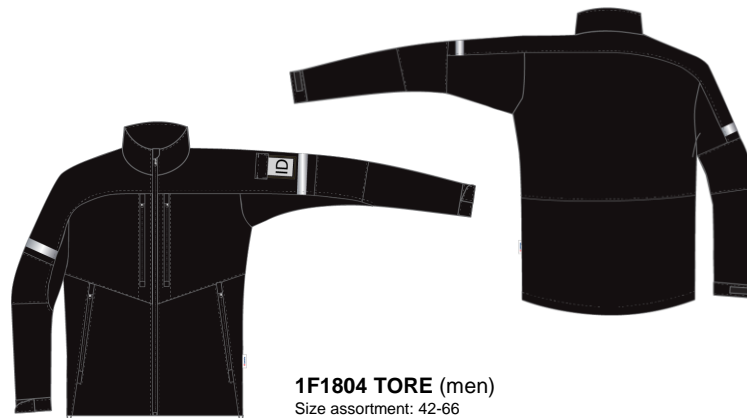
Planned Collection:
Ready for Sales

Photo availability:
Will follow.

Stretch jacket for men, slim fit

Main material: 68% Polyester / 32% Elastomultiester, 210gsm
Stretch details: 91% Polyamide / 9% Elastane, 250 gsm

Slim fit stretch jacket for men with comfortable stretch panel details. Modern look zippers at front and pocket closures. Two large lower pockets and two chest pockets. Special stretch panels at sleeves and back offer maximum mobility and comfort. Detachable ID card holder on left sleeve. Reflective band details at the upper part of sleeves. Hem width can be adjusted with an easy elastic cord solution. Sleeve end can be adjusted with velcro.

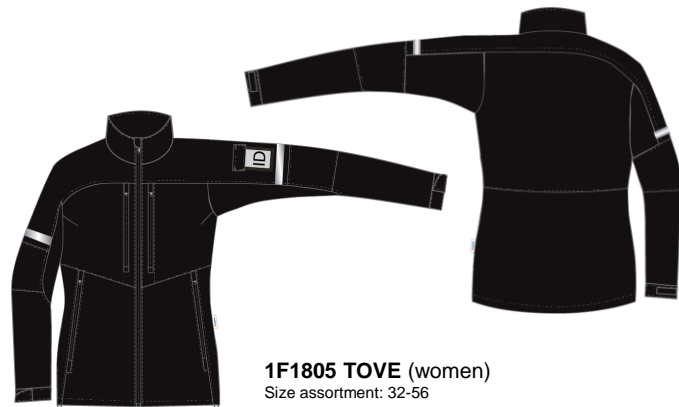


1F1804 TORE (men)
Size assortment: 42-66

Stretch jacket for women, slim fit

Main material: 68% Polyester / 32% Elastomultiester, 210gsm
Stretch details: 91% Polyamide / 9% Elastane, 250 gsm

Slim fit stretch jacket for women with comfortable stretch panel details. Modern look zippers at front and pocket closures. Two large lower pockets and two chest pockets. Special stretch panels at sleeves and back offer maximum mobility and comfort. Detachable ID card holder on left sleeve. Reflective band details at the upper part of sleeves. Hem width can be adjusted with an easy elastic cord solution. Sleeve end can be adjusted with velcro.



1F1805 TOVE (women)
Size assortment: 32-56

TORE STRETCH JACKET M

Material: 68PES/32EOL, 210 gsm
Stretch panel details 91PA/9EL, 250 gsm

Size range: 42-66

Certification: -

Product description: Slim fit stretch jacket for men with comfortable stretch panel details. Modern look zippers at front and pocket closures. Two large lower pockets and two chest pockets. Special stretch panels at sleeves and back offer maximum mobility and comfort. Detachable ID card holder on left sleeve. Reflective band details at the upper part of sleeves. Hem width can be adjusted with an easy elastic cord solution. Sleeve end can be adjusted with velcro.



1F1804
Black

TOVE STRETCH JACKET W

Material: 68PES/32EOL, 210 gsm
Stretch panel details 91PA/9EL, 250 gsm

Size range: 42-66

Certification: -

Product description: Slim fit stretch jacket for men with comfortable stretch panel details. Modern look zippers at front and pocket closures. Two large lower pockets and two chest pockets. Special stretch panels at sleeves and back offer maximum mobility and comfort. Detachable ID card holder on left sleeve. Reflective band details at the upper part of sleeves. Hem width can be adjusted with an easy elastic cord solution. Sleeve end can be adjusted with velcro.



1F1805
Black

TIM STRETCH TROUSERS M

Material: 68PES/32EOL, 210 gsm
Stretch panel details 91PA/9EL, 250 gsm

Size range: 42-66

Certification: -

Product description: Slim fit stretch trousers with comfortable stretch panel details. Two leg pockets with flap covers and hidden press button closure. Additional small gadget pocket on right side, and detachable ID card holder on left. Elastic band inside waist that can be adjusted on both sides for comfortable waist width. Shaped knees. Reflective band on both legs. Elastic band and velcro adjustment at leg opening.



1F0403
Black

TINO STRETCH TROUSERS M

Material: 68PES/32EOL, 210 gsm
Stretch panel details 91PA/9EL, 250 gsm
Knee pockets: 100PA, 220 gsm

Size range: 42-66

Certification: -

Product description: Stretch trousers with comfortable stretch panel details and Cordura knee pockets. Two leg pockets with flap covers and hidden press button closure. Additional small gadget pocket on right side, and detachable ID card holder on left. Elastic band inside waist that can be adjusted on both sides for comfortable waist width. Shaped knees. Reflective band on both legs. Elastic band and velcro adjustment at leg opening. Cordura knee pockets outside. stretch fabric inside knee pockets for comfortable movement.



1F0404
Black

TIA STRETCH TROUSERS W

Material: 68PES/32EOL, 210 gsm
Stretch panel details 91PA/9EL, 250 gsm

Size range: 32-56

Certification: -

Product description: Slim fit stretch trousers with comfortable stretch panel details. Two leg pockets with flap covers and hidden press button closure. Additional small gadget pocket on right side, and detachable ID card holder on left. Elastic band inside waist that can be adjusted on both sides for comfortable waist width. Shaped knees. Reflective band on both legs. Elastic band and velcro adjustment at leg opening.

Women's fit!



1F0631
Black

TINA STRETCH TROUSERS W

Material: 68PES/32EOL, 210 gsm
Stretch panel details 91PA/9EL, 250 gsm
Knee pockets: 100PA, 220 gsm

Size range: 32-56

Certification: -

Product description: Stretch trousers with comfortable stretch panel details and Cordura knee pockets. Two leg pockets with flap covers and hidden press button closure. Additional small gadget pocket on right side, and detachable ID card holder on left. Elastic band inside waist that can be adjusted on both sides for comfortable waist width. Shaped knees. Reflective band on both legs. Elastic band and velcro adjustment at leg opening. Cordura knee pockets outside. stretch fabric inside knee pockets for comfortable movement.

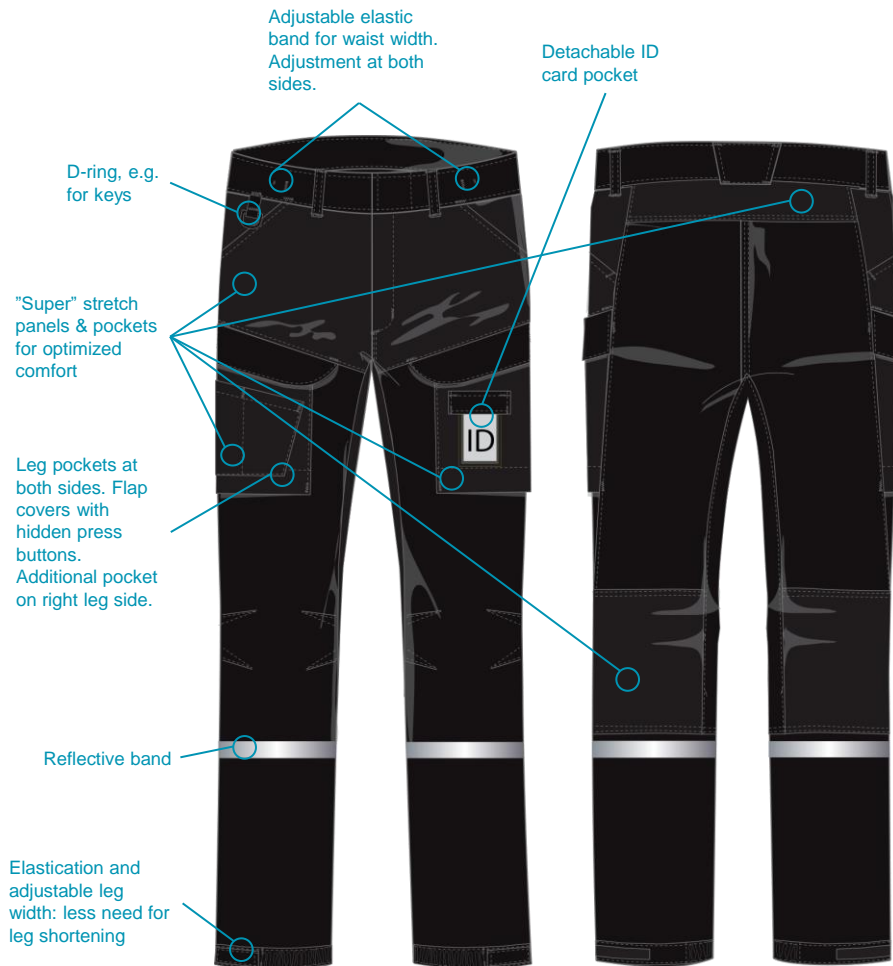
Women's fit!



1F0632
Black

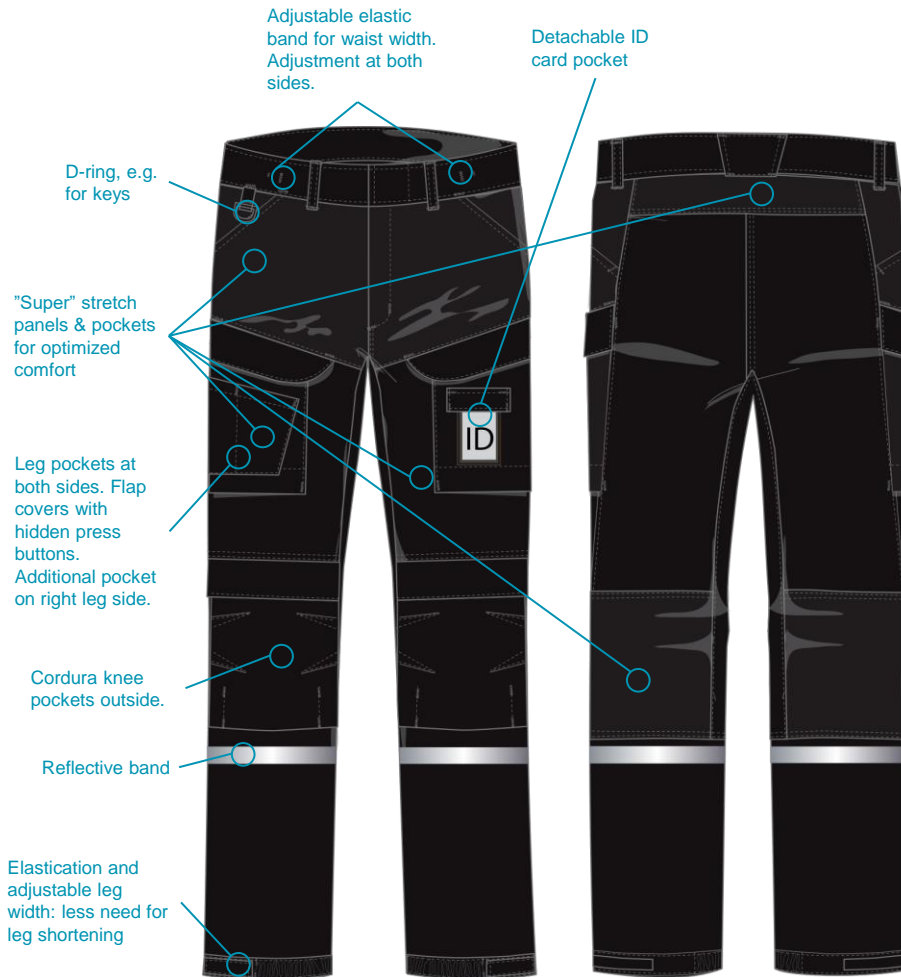
Stretch trousers, slim fit

- New fit for men and women
- Two stretch materials combined in the design. Material placement is designed for optimal user comfort.
 - Main material: Pro Stretch 210. 2-way stretch, COOLMAX® technology, 68% Polyester/ 32% Elastomultiester, 210 gsm
 - Stretch details: 91% Polyamide/ 9% Elastane, 250 gsm
- Elastication and adjustment at leg ends make the common use easier, and the trouser suitable also for the FLEX service model.
- Leg pockets at both sides. Flap covers and hidden press buttons. Pockets are made with hi-stretch material.
- Detachable ID card pocket.



Stretch trousers with knee pockets

- New fit for men and women. Leg width for knee pockets
- Two stretch materials combined in the design. Material placement is designed for optimal user comfort.
 - Main material: Pro Stretch 210. 2-way stretch, COOLMAX® technology, 68% Polyester/ 32% Elastomultiester, 210 gsm
 - Stretch details: 91% Polyamide/ 9% Elastane, 250 gsm
 - Knee pockets: Cordura, 100% Polyamide, 220 gsm
- Elastication and adjustment at leg ends make the common use easier, and the trouser suitable also for the FLEX service model.
- Leg pockets at both sides. Flap covers and hidden press buttons. Pockets are made with hi-stretch material.
- Detachable ID card pocket.
- Easy to use knee pockets outside, made from Cordura fabric type.



WorkerPro Collection

Look Pro!
Functional workwear
for every workers.



**Perfect for workwear!
Comfortable material
with excellent color
fastness and durability.**

We ensure that you always have
smart looking and tidy workwear.

Pro Twill 245

65 PES/ 35 CO 245g

ProTwill is our most popular material
with hundreds of thousands happy
users.



**Look
Pro!**



Pro Outdoor 235

70 PES/ 30 CO 235g

Pro Outdoor is excellent choice when you
need durable and good looking material
for workwear used outdoors.

8014 REX JACKET M

Material: Pro Twill 245

Colour: Royal blue & Bottle green

Size range: 36-66, 42-66 (bottle green and red)

Product description:

Men's jacket with folded collar. Yoke on back and front. Hidden press button closure at front placket. 2 breast pockets, left patch pocket with a pen compartment and right pocket with a flap. List pockets at side bottom. Straight sleeve opening, width can be adjusted with a press button.

Best Seller



8114

17871

REX JACKET M

Material: Pro Twill 245

Colour: Black / Convoy

Size range: 42-66

Product description:

Men's stand up collar jacket. Full length zipper at front. Visible press buttons at front list. Sleeve opening with cuffs and slit, press button adjustment. 2 breast pockets - 2 press buttons at pocket flaps, pen pocket at right. Side pockets with press button closure. Press button adjustment at hem. D-ring loop underneath right breast pocket flap

Best Seller



1L1389 REX JACKET M

Material: Pro Twill 245

Colour: Navy / Royal

Size range: 42-66

Product description:

Front fastening with zipper and panel with hidden press buttons. Stand up-collar. Breast pockets with flaps and hidden buttons, on the right hand side double pocket with pen pocket. Lower pockets with a hidden button. Sleeve ends with slits and adjustable with hidden press buttons. Tab adjustments on hem.

Best Seller



18436

REX JACKET M

Material: Pro Twill 245

Colour: Convoy / Red

Size range: 42-66

Product description:

Men's jacket. New improved fit (easy arm movement, wide back for comfortable fit). Stand collar. Full length zipper at front. Visible press buttons at front list. Sleeve opening with cuffs and slit, push button adjustment. 2 breast pockets - 2 push buttons at pocket flaps, pen pocket at right. Side pockets with push button closure. Push button adjustment at hem. D-ring loop underneath right breast pocket flap. Reflective piping at front and back.

Best Seller



8214

REX JACKET M

Material: Pro Twill 245

Colour: Red

Size range: 42-66

Product description:

Men's jacket with folded collar. Yoke on back and front. Hidden press button closure at front placket. 2 breast pockets, left patch pocket with a pen compartment and right pocket with a flap. List pockets at side bottom. Straight sleeve opening, width can be adjusted with a press button.

Ready For Sale



1L0057

REX JACKET M

Material: Pro Twill 245

Colour: Royal Blue (with reflecting bands)

Size range: 42-66

Product description:

Men's jacket. Wide back enables easy arm movement. Press button closure at front. 2 breast pockets, at left hand side patch pocket with a pen compartment, at right hand side flap pocket. List pockets at side bottom. Straight sleeve opening, width can be adjusted with press button. Hidden press buttons. 20mm Reflecting bands on sleeve and yoke end on back and front.

Ready For Sale



1L8899 REX JACKET M

Material: Pro Cotton Rich 315

Colour: Black

Size range: 42-66

Product description:

Men's jacket with stand collar and two breast pockets. Sleeves attached with reflecting band



Ready For Sale

1L5112

REX JACKET M

Material: Pro Twill 245

Colour: Navy / Red

Size range: 42-66

Product description:

Men's jacket with folded collar. Yoke on back and front in different color. Hidden press button closure at front placket. 2 breast pockets, left patch pocket with a pen compartment and right pocket with a flap. List pockets at side bottom. Straight sleeve opening, width can be adjusted with a press button.

Ready For Sale



1L5113

REX JACKET M

Material: Pro Twill 245

Colour: Navy / Royal Blue

Size range: 42-66

Product description:

Men's jacket with folded collar. Yoke on back and front in a different color. Hidden press button closure at front placket. 2 breast pockets, left patch pocket with a pen compartment and right pocket with a flap. List pockets at side bottom. Straight sleeve opening, width can be adjusted with a press button.

Ready For Sale



1L5111

REX JACKET M

Material: Pro Twill 245

Colour: Navy / Bottle Green

Size range: 42-66

Product description:

Men's jacket with folded collar. Yoke on back and front in a different color. Hidden press button closure at front placket. 2 breast pockets, left patch pocket with a pen compartment and right pocket with a flap. List pockets at side bottom. Straight sleeve opening, width can be adjusted with a press button.

Ready For Sale



1L5114

REX JACKET M

Material: Pro Twill 245

Colour: Navy / Graphite

Size range: 42-66

Product description:

Men's jacket with folded collar. Yoke on back and front in a different color. Hidden press button closure at front placket. 2 breast pockets, left patch pocket with a pen compartment and right pocket with a flap. List pockets at side bottom. Straight sleeve opening, width can be adjusted with a press button.

Ready For Sale



1L5143

REX JACKET M

Material: Pro Twill 245

Colour: Navy

Size range: 42-66

Product description:

Men's jacket with folded collar. Hidden press button closure at front placket. 2 breast pockets, left patch pocket with a pen compartment and right pocket with a flap. List pockets at side bottom. Straight sleeve opening, width can be adjusted with a press button.

Ready For Sale



1V6407

REX JACKET M CONVOY

Material: Pro Twill 245

Colour: Convoy

Size range: 42-66

Product description:

Men's jacket. Front placket with hidden push buttons. Zipper opening under front placket. Two chest pockets, flap pocket at right chest with hidden push button. Pen pocket stitching at left. Lower-front welt pockets. Straight sleeve opening with velcro adjustment.

Ready For Sale



LINDSTRÖM OY RESERVES ALL RIGHTS FOR THE DESIGNS. MODIFICATIONS POSSIBLE.

1L3830 REX JACKET M

Material: Pro Twill 245

Colour: Convoy / FL Yellow

Size range: 42-64

Product description:

Men's jacket with stand collar. 2 breast pockets.

Ready For Sale



1L7471

REX JACKET M

Material: Pro Twill 245

Colour: Convoy / Red

Size range: 42-66

Product description:

Men's jacket, convoy grey / red. Concealed snap button closure at front. Chest pocket on right with tool loops and snap button fastening. Sleeve cuffs with Velcro closure. Reflective piping in yoke seam.

Ready For Sale



18239

REX JACKET M

Material: Pro Twill 245

Colour: Red / Black

Size range: 42-66

Product description:

Front fastening with zipper and panel with hidden press buttons. Stand up-collar. Breast pockets with flaps, on the left side mobile phone pocket, pen pocket on the right side. Lower pockets with a hidden press button. Sleeve ends adjustable with velcrotape, velcrotab adjustments on hem.

Ready For Sale



1L0997

REX JACKET M

Material: Pro Twill 245

Colour: Charcoal / Navy

Size range: 42-62

Product description:

High collar. Zipper closure at front. Placket with hidden snap buttons. 2-Level chest pocket on right, flap with hidden snap buttons, pen stitching and mobile phone pocket, flap with velcro fastening. Chest pocket on left, flap with hidden snap buttons, reinforcement at lower-part of the pocket. Zip pockets on lower-front. Hidden snap button adjustment at sleeve cuffs. Snap button adjustment at back waist.

Ready For Sale



1L1087 REX JACKET M

Material: Pro Twill 245

Colour: Graphite / Charcoal

Size range: 42-66

Product description:

Men's jacket with fold collar. Hidden push buttons at front. Chest pockets with flap and push button closure at right side. Patch pocket at left chest. Patch pockets at sides. Cuff adjustable by push buttons. Reflective bands on sleeves.

Ready For Sale



1L2068 REX JACKET M

Material: Pro Twill 245

Colour: Convoy / New Seville Orange

Size range: 42-66

Product description:

Men's jacket with high collar with zipper closure, placket snap buttons. Two chest pockets with flap and snaps button fastening. Two lower pockets with snap button closure. Adjustable cuffs with snap buttons. Adjustable tabs at back hem. Reflective piping in yoke line in front and back. 20mm reflective bands around sleeves.

Ready For Sale



1L2335 REX JACKET M

Material: Pro Twill 245

Colour: Convoy / Black

Size range: 42-66

Product description:

Zipper and press buttons under the front flap. Chest pockets with flap + press buttons. D-ring under the right chest pocket's flap. Side pockets with press button fastening. Adjustable press button fastening on cuffs and hem. Reflective piping on front and back yoke.



Ready For Sale

1L2515 REX JACKET M

Material: Pro Outdoor 235

Colour: Bottle Green /FL Yellow

Size range: 48-58

Product description:



Ready For Sale

1L2729

REX JACKET M

Material: Pro Twill 245

Colour: Navy

Size range: 42-60

Product description:

Men's jacket with zipper closure and placket with hidden snap buttons. Chest pockets with flap and hidden press buttons. Lower welt pockets. Hidden snap button adjustment in cuffs. Adjustable tabs at back hem. Reflective band on chest and yoke line at back. Reflective piping in sleeves.

Ready For Sale



1L2820 REX JACKET M

Material: Pro Twill 245

Colour: Convoy / New Seville Orange

Size range: 42-66

Product description:

High collar. Zipper closure, placket with hidden press buttons. Press button adjustment in sleeve ends. Inside pocket on right chest with Velcro fastening. 20mm reflecting bands on chest and back yoke seam.



Ready For Sale

1L3132

REX JACKET M

Material: Pro Twill 245

Colour: Royal Blue

Size range: 46-62

Product description:

Rex jacket Royal blue. Low stand up collar. Hidden snap button fastening. Straight sleeve with snap button adjustment. Adjustable tabs at back with visible snap buttons. Inside pocket on left chest with Velcro fastening.

Ready For Sale



1L3152 REX JACKET M

Material: Pro Twill 245

Colour: Navy

Size range: 46-66

Product description:

Men's jacket. Front closure with hidden press buttons, low stand up collar. Rib in sleeve ends.

Ready For Sale



1L3548

REX JACKET M

Material: Pro Twill 245

Colour: Convoy / Red

Size range: 46-58

Product description:

High collar, zipper closure, placket with hidden snap buttons, sleeve ends with snap button closure. Chest pockets with flap and hidden snap button closure. Phone pocket with Velcro on right pocket. Adjustable tabs at back hem with snap buttons. 20mm reflective band in front and back yoke lines.

Ready For Sale



1L3700

REX JACKET M

Material: Pro Twill 245

Colour: Navy / FL Yellow

Size range: 42-66

Product description:

High collar, zipper closure, placket with hidden snap buttons, sleeve ends with snap button closure. Chest pockets with flap and hidden snap button closure. Phone pocket with Velcro on right pocket. Adjustable tabs at back hem with snap buttons. 20mm reflective band in front and back yoke lines.

Ready For Sale



1L3874 REX JACKET M

Material: Pro Twill 245

Colour: Royal Blue / FL Yellow

Size range: 42-66

Product description:



Ready For Sale

1V0674

REX JACKET M BLACK /GRAPHITE

Material: Pro Twill 245

Colour: Black/ Graphite

Size range: 42-66

Product description:

Men's jacket with long sleeves. High stand-up collar and list closer with hidden press-buttons. Sleeves with cuffs with hidden press buttons adjustment. Grey piping under the yoke. 2 inner pockets on the waistline.

Ready For Sale



LINDSTRÖM OY RESERVES ALL RIGHTS FOR THE DESIGNS. MODIFICATIONS POSSIBLE.

1V1742

REX JACKET M BLACK /GRAPHITE

Material: Pro Twill 245, Pro Outdoor 235

Colour: Navy / Fluorescent orange

Size range: 42-66

Product description:

Men's navy blue colored jacket with stand up collar. FI orange yoke on back and front. Hidden press button closure at front placket with zipper. 2 breast pockets, the right patch pocket with a pen compartment and left pocket with two layers: mobile phone pocket on top and a bigger lower pocket with a flap. List pockets at side bottom. Straight sleeve opening, width can be adjusted with a press button. Press button adjustment in the sides.

Ready For Sale



1V7043 REX JACKET M

Material: Pro Twill 245

Colour: Black / Red

Size range: 42-60

Product description:



Ready For Sale

1V7628

REX JACKET M BOTTLE

GREEN/FLY

Material: Pro Twill 245, Pro Outdoor 235

Colour: Bottle green / Fluorescent Yellow

Size range: 42-66

Product description:

Men's jacket with stand collar. Front list with hidden snap buttons, zipper underneath. Patch pockets with flaps and several compartments. D-ring on right chest side. Front side pockets. Sleeves with vent and adjustable cuff snap button closure. Adjustable back hem with hidden snap button. Single 50 mm fluorescent yellow stripes on the front yoke, double on the back, double stripes on top sleeves.



Ready For Sale

1L5726

REX JACKET M

Material: Pro Twill 245

Colour: Black / New Sewille Orange

Size range: 42-66

Product description:

Men's jacket. Stand up collar. Full length zipper at front. Concealed closure on front. Sleeve opening with cuffs and slit, push button adjustment. 2 breast pockets, mobile phone pocket on left - 2 push buttons at pocket flaps. D-loop under right chest pocket flap. Side pockets. Push button adjustment at hem. Reflective piping at shoulders at front and back.

Ready For Sale



40855 REX JACKET M

Material: Pro Twill 245

Colour: Convoy / New Sewille Orange

Size range: 42-66

Product description:

High collar, zipper closure at front, placket with hidden push buttons, straight sleeve end, 20mm reflective band on front and back yoke.

Ready For Sale



41040 REX JACKET M

Material: Pro Twill 245

Colour: Navy / Royal

Size range: 44-64

Product description:

Men's jacket with hidden snap button closure. Left pocket with pen stitching. Right inside pocket with velcro closure. Two lower pockets. White piping in sleeve seams and yoke seams on front and back

Ready For Sale



41151 REX JACKET M

Material: Pro Twill 245

Colour: Black / Convoy

Size range: 42-66

Product description:

Men's jacket with stand collar. Hidden press button closure. Two breast pockets.

Ready For Sale



41294 REX JACKET M

Material: Pro Twill 245

Colour: Navy

Size range: 42-66

Product description:

Men's jacket with fold collar. Zipper closure at front. Flap pocket with velcro at left chest. List pocket with zip at right chest. List pockets at front sides. Cuffs with ribknit. Straight hem. Reflecting bands on sleeves, chest and back.

Ready For Sale



41362

REX JACKET M

Material: Pro Twill 245

Colour: Graphite / Charcoal

Size range: 42-66

Product description:

Men's jacket with fold collar. Hidden push buttons at front. 2 chest pockets with flap and push button closure. Side pockets with push buttons. Cuff adjustable by push buttons. Reflective bands on sleeves.



Ready For Sale

1L1761

REX JACKET M

Material: Pro Twill 245

Colour: Royal Blue

Size range: 44-64

Product description:

Men's stand collar jacket. Full length zipper at front. Visible press buttons at front list. Sleeve opening with cuffs and slit, press button adjustment. 2 breast pockets - 2 press buttons at pocket flaps, pen pocket at right. Side pockets with press button closure. Press button adjustment at hem. D-ring loop underneath right breast pocket flap.

Ready For Sale



1L3132

REX JACKET M ROYAL BLUE

Material: Pro Twill 245

Colour: Royal Blue

Size range: 46-62

Product description:

Rex jacket Royal blue. Low stand up collar. Hidden snap button fastening. Straight sleeve with snap button adjustment. Adjustable tabs at back with visible snap buttons. Inside pocket on left chest with Velcro fastening.

Ready For Sale



1L0791

REX JACKET M

Material: Pro Twill 245

Colour: Convoy / New Seville Orange

Size range: 42-66

Product description:

High collar. Zipper closure on front. Placket with hidden snap buttons. Chest pocket inside at right with velcro fastening. Snap button adjustment on sleeve end.

Ready For Sale



1L0440 REX JACKET M

Material: Pro Twill 245

Colour: Convoy

Size range: 42-66

Product description:

Men's jacket with zipper fastening. Front placket with hidden push buttons. Two chest pockets, flap pocket at right chest with hidden push button. Pen pocket stitching at left. Lower-front welt pockets. Straight sleeve opening with velcro adjustment.



Ready For Sale

1V2221 REX JACKET M

Material: Pro Co Rich 245

Colour: Convoy

Size range: 42-66

Product description:

Men's jacket. Front placket with hidden push buttons. Two chest pockets, flap pocket at right chest with hidden push button. Pen pocket stitching at left. Lower-front welt pockets. Straight sleeve opening with velcro adjustment.



Ready For Sale

1V5059

REX JACKET M NAVY/FLY

Material: Pro Co Rich 245, Pro Outdoor 235

Colour: Navy, Fluorescent yellow

Size range: 42-66

Product description:

Men's jacket with stand collar. Opening with zip and hidden push buttons. Flap pockets at chest with velcro, pen pocket at right. Side pockets. Sleeve with cuff adjustable by velcro. 20mm reflective band at yokes, at shoulder and at sleeves.



Ready For Sale

1F0353

REX JACKET M

Material: Pro Twill 245

Colour: Navy / Royal

Size range: 42-66

Product description:

Front fastening with zipper and panel with hidden press buttons. Stand up-collar. Breast pockets with flaps and hidden buttons, on the right hand side double pocket with pen pocket. Lower pockets with a hidden button. Sleeve ends with slits and adjustable with hidden press buttons. Tab adjustments on hem. Reflective bands at sleeves. 50 mm reflective band on sleeves.

Ready for Sale



1V3392

REX JACKET M

CONVOY/ROYAL BLUE

Material: Pro Twill 245

Colour: Convoy, royal blue

Size range: 42-66

Product description:

Men's jacket. Stand collar. Full length zipper at front. Visible press buttons at front list. Sleeve opening with cuffs and slit, push button adjustment. 2 breast pockets - 2 push buttons at pocket flaps, pen pocket at right. Side pockets with push button closure. Push button adjustment at hem. D-ring loop underneath right breast pocket flap. Reflective piping at front and back.

Ready For Sale



1V4003

REX JACKET M

CONVOY/FLRED

Material: Pro Twill 245

Colour: Convooy, fluorescent red

Size range: 42-66

Product description:

Men's jacket with stand collar, opening with zip and push buttons. Flap pockets at chest, pen pocket at right. Side pockets with push buttons. Sleeve opening adjustable by push buttons. Push button adjustment at hem. 20mm reflective band at front and back yoke. Design contrast stitching Pale grey.

Ready For Sale



41131

REX JACKET M

Material: Pro Twill 245

Colour: Royal Blue / Red

Size range: 42-66

Product description:

Men's stand up collar jacket. Full length zipper at front. Visible press buttons at front list. Sleeve opening with cuffs and slit, press button adjustment. 2 breast pockets - 2 press buttons at pocket flaps, pen pocket at right. Side pockets with press button closure. Press button adjustment at hem. D-ring loop underneath right breast pocket flap.

Ready For Sale



1L0948 REX JACKET M

Material: Pro Twill 245

Colour: Navy

Size range: 42-66

Product description:

Men's jacket with fold collar. Right patch pocket with flap and hidden snap button, left chest pocket with pen stitching. Side list pockets on front. Snap button adjustment on sleeve ends.

Ready For Sale



18945 REX JACKET M

Material: Pro Twill 245

Colour: Royal Blue

Size range: 42-66

Product description:

Men's jacket blue. Stand-up collar. Placket with concealed press button closure. Straight sleeves with adjustable press buttons. Breast pockets, right one with flap, left one pen compartment. Welt pockets below.

Ready For Sale



18077 REX JACKET M

Material: Pro Twill 245

Colour: Royal Blue / New Seville Orange

Size range: 42-66

Product description:

Men's jacket with low stand up collar. Opening with hidden push buttons. 2 chest pockets. Flap pocket at right chest, pen pocket at left. Patch pockets at front. Hem adjustment with visible push buttons. Straight sleeve opening, adjustable by push buttons.

Ready For Sale



1L0057

REX JACKET REF M REF

Material: Pro Twill 245

Colour: Royal blue

Size range: 42-66

Product description:

Men's jacket. Wide back enables easy arm movement. Press button closure at front. 2 breast pockets, at left hand side patch pocket with a pen compartment, at right hand side flap pocket. List pockets at side bottom. Straight sleeve opening, width can be adjusted with press button. Hidden press buttons. 20mm Reflecting bands on sleeve and yoke end on back and front.



Ready For Sale

40269

REX JACKET M

Material: Pro Twill 245

Colour: Convoy / Red

Size range: 42-66

Product description:

Men's grey workwear jacket. Side pannels at the back and front. Red yoke at front and back, red inserts at sides. 20mm reflecting bands at the dowside of yokes. Cuffs with slit and pleat, press buttons adjustment. 1-piece fold collar with front panel and press buttons. Side list pockets. Patch pockets with flaps at the chest.



Ready For Sale

40474

REX JACKET M

Material: Pro Outdoor 235

Colour: Graphite / FL Orange

Size range: 42-66

Product description:

Stand up collar with front list. Zipper and press button closure. Patch pocket on left chest. Patch pocket with flap and press button closure on right chest. Side list pockets with press button closure. Hem adjustment with press buttons. Cuff adjustment with press buttons.

Ready For Sale



1V3873

REX JACKET M

Material: Pro Twill 245

Colour: Convoy / Bottle Green

Size range: 42-66

Product description:

Men's jacket with high collar, zipper closure at front, placket with hidden press buttons. Straight sleeve opening, width can be adjusted with press button. 20mm reflective band on front and back yoke and around sleeves.



Ready For Sale

1V3200 REX JACKET M

Material: Pro Twill 210

Colour: White / Orange

Size range: 42-66

Product description:

Men's jacket with folded collar. Yoke on back and front. Hidden press button closure at front placket. List pocket on left chest. List pockets at side bottom. Straight sleeve opening, width can be adjusted with a press button.

Ready For Sale



1V7760

REX JACKET M

Material: Pro Twill 245

Colour: Convoy / Black

Size range: 42-66

Product description:

Men's jacket with folded collar. Yoke on back and front. Velcro closure at front placket. 1 breast pocket with velcro closure. List pockets at side bottom with velcro closure. Straight sleeve opening, width can be adjusted with velcro. Hem adjustable with velcro.



Ready For Sale

1V7761

REX JACKET M

Material: Pro Twill 245

Colour: Convoy / Red

Size range: 42-66

Product description:

Men's jacket with folded collar. Yoke on back and front. Velcro closure at front placket. 1 breast pocket with velcro closure. List pockets at side bottom with velcro closure. Straight sleeve opening, width can be adjusted with velcro. Hem adjustable with velcro.

Ready For Sale



1L3452

REX JACKET M

NAVY/GRAPHITE

Material: Pro Twill 245

Colour: Navy / Graphite

Size range: 42-66

Product description:

Men's jacket with long sleeves. Stand up collar, zipper closer with panel which closes with hidden press buttons. Side panel of different colour on front. List pockets with hidden press buttons closer on waistline. Two hidden pockets with Velcro on chest line. Cuffs closes with Velcro. Adjustment on the bottom back, with Velcro.



Ready For Sale

1V7869

REX JACKET M

NAVY/ROYAL BLUE

Material: Pro Twill 245

Colour: Navy / Royal Blue

Size range: 42-66

Product description:

Front fastening with zipper and panel with velcro. Stand up-collar. Breast pockets with flaps and velcro, on the right hand side double pocket with pen pocket. Lower pockets with velcro. Sleeve ends with slits and adjustable with velcro. Tab adjustments on hem.

Ready For Sale



1V8756

REX JACKET M

NAVY/ROYAL BLUE

Material: Pro Twill 245

Colour: Navy / Royal Blue

Size range: 42-66

Product description:

Front fastening with zipper and panel with hidden press buttons. Stand up-collar. Sleeve ends with slits and adjustable with hidden press buttons. Tab adjustments on hem.

Ready For Sale



1V3288

REX JACKET M

Material: Pro Twill 245

Colour: Black / FL Yellow

Size range: 42-66

Product description:

Men's jacket with stand collar, opening with zip and push buttons. Flap pockets at chest, pen pocket at right. Side pockets with push buttons. Sleeve opening adjustable by push buttons. Push button adjustment at hem.



Ready For Sale

1V4081

CE FR MULTIPRO JACKET

Material: FR Multipro Heavy Duty 350

Colour: Navy / FLY

Size range: 42-66

Product description:

EN ISO 11612:2015, A1 B1 C1 F1

EN 1149-5:2008

IEC 61482-2:2009 Class 1 (4kA), ATPV 13 cal/cm²

EN ISO 11611:2015, A1 Class 1

Flame retardant & antistatic jacket. Suitable for ATEX environments. Zipper closure under front cover list. Two flap pockets at chest, loops and pen compartment at left hand side - lowered position for improved ergonomics. Large bottom side pockets with zipper closure. Inside pocket (A4 fits in). Sleeve end and hem adjustment with velcro. Fluorescent yellow at back yoke for improved visibility. FR reflective bands around sleeves and back yoke.

Ready For Sale



18437

MARIO WAISTCOAT M

Material: Pro Twill 245

Colour: Black/Convoy

Size range: 42-66

Product description:

Men's waistcoat. Stand collar. Full length zipper at front. Visible press buttons at front list. 2 breast pockets - Press buttons at pocket flaps, pen pocket at right. Side pockets with press button closure. Press button adjustment at hem. D-ring loop underneath right breast pocket flap.

Ready For Sale



1L0495

MARIO WAISTCOAT M

Material: Pro Twill 210

Colour: Navy / Peacock

Size range: 42-66

Product description:

Men's waistcoat with press button closure.



Ready For Sale

1V1516

MARIO WAISTCOAT M

Material: Pro Twill 245

Colour: Convoy

Size range: 42-66

Product description:

Men's waistcoat. Stand collar. Full length zipper at front. Visible press buttons at front list. 2 breast pockets - Press buttons at pocket flaps, pen pocket at right. Side pockets with press button closure. Press button adjustment at hem. D-ring loop underneath right breast pocket flap.

Ready For Sale



1V0404 MARIO WAISTCOAT M ROYAL/RED

Material: Pro Twill 245

Colour: Convoy

Size range: 42-66

Product description:

Men's waistcoat. Stand up collar. Zipper closure and placket with snap buttons. Flap pockets on chest and two large lower-front pockets with snap buttons.

Ready For Sale



2278

REAL PRO JACKET M

Material: Pro Outdoor 235

Colour: Black/Convoy

Size range: 44-66

Product description:

Men's jacket with stand up collar. Concealed zipper closure with press buttons. Multiple pockets. On the left side ID-card pocket, breast pocket with multiple compartments partly covered with a flap, large map pocket and tool loops. On the right side patch pocket with a flap and mobile phone pocket. Large pockets at the bottom. Inside breast pocket with a mobile phone pocket. Sleeve opening width can be adjusted with a press buttons. Reflective piping.

Non Platform



2283

REAL PRO WINTER JACKET

M

Material: Pro Outdoor 235

Colour: Black/Convoy

Size range: 44-66

Product description:

Men's winter jacket with wadding and lining. Stand up collar with press buttons for hood attachment. Wind panel with press buttons covering the zipper at front. Pocket with a zipper under the wind panel also. On the left side a breast pocket with a flap and pen stitching. On the right side an ID-card pocket and breast pocket with a flap. Lower pockets with press button closure. Elasticated band on the sides of the waist. Sleeve end with inside rib and velcro adjustment. Reflective piping.

Hood: D183

Non Platform



8064

ALEC COAT SHORT LS M

Material: Pro Twill 245

Colour: Royal Blue

Size range: 42-66

Product description:

Men's short coat with long sleeve. Hidden press buttons. 1 flap pocket at left chest, 2 patch pockets. Straight sleeve opening, adjustable by press buttons.



Best Seller

41325

ALEC COAT SHORT LS M

Material: Pro Twill 245

Colour: Royal Blue

Size range: 42-66

Product description:

Fold collar. Hidden press buttons at front. Long sleeves with straight ends.

Best Seller



8006 ALEC COAT LONG LS M

Material: Pro Twill 245

Colour: Royal Blue, Convoy

Size range: 42-66

Product description:

Men's long coat with long sleeve. Press buttons. 1 flap pocket at left chest, 2 patch pockets. Straight sleeve opening, adjustable by press buttons.

Ready For Sale



18435

41187

ALEC COAT LONG LS M

Material: Pro Twill 245

Colour: New Seville Orange

Size range: 42-66

Product description:

Men's long coat with long sleeves. Push button closure. New fit. Back belt adjustable with push buttons. Chest pocket at left. 2 patch pockets at front. Straight sleeve opening, adjustable by push buttons.

Ready For Sale



1L2039

ALEC COAT LONG LS M

Material: Pro Twill 245

Colour: Red

Size range: 46-64

Product description:

Men's long coat with long sleeve. Two patch pockets. Straight sleeve opening, adjustable by press buttons.

Ready For Sale



1L3769

ALEC COAT LONG LS M

Material: Pro Twill 210

Colour: Red

Size range: 42-66

Product description:

Men's long coat with folded collar.

Front closure with hidden snap buttons till top.

Front patch pockets with hidden snap button closure at flaps.

Straight sleeve opening with snap button adjustment.



Ready For Sale

1L2033

ALEC COAT EXTRA LONG LS

Material: Pro Twill 245

Colour: Navy / New Seville Orange

Size range: 42-66

Product description:

Men's extra long coat with long sleeve. Press buttons. Straight sleeve opening, adjustable by press buttons.

Ready For Sale



1L5779

ALEC COAT EXTRA LONG LS

Material: Pro Twill 210

Colour: Bottle Green

Size range: 46-60

Product description:

Men's extra long coat with long rollable sleeves, adjustable by press buttons. Press button closure. Back belt adjustable with press buttons. 1 patch pocket at left chest with pen stitching. 2 patch pockets at bottom.

Ready For Sale



1L8369 ALEC COAT SHORT LS M BGREEN

Material: Pro Twill 245

Colour: Bottle Green

Size range: 42-66

Product description:

Men's short coat. Hidden ring press button closure in front with top push button. Straight sleeve opening, adjustable by push buttons. Flap pockets on lower part.

Ready For Sale



18380 ALEC COAT LS M

Material: Pro Twill 210

Colour: Khaki

Size range: 42-66

Product description:

Front closure and sleeve ends with hidden push buttons.

Pockets with hidden push button closure on side seam below waist.



Ready For Sale

1L5773

ALEC COAT SHORT LS M

BLACK/NSO

Material: Pro Twill 210, Pro Twill 245

Colour: Black, New Seville Orange

Size range: 42-66

Product description:

Men's short coat with long sleeve. Folded collar. Press buttons. 1 patch pocket at left chest, 2 patch pockets on waist. Straight sleeve opening, adjustable by press buttons.

Ready For Sale



1V7125 ALEC COAT SHORT LS M WHITE

Material: Pro Twill 210

Colour: White

Size range: 42-66

Product description:

Front closure with hidden snap buttons. Wide sleeve end, hidden snap button closure. Tab inside for rolled sleeve. Inside pocket on left chest.



Ready For Sale

1F1426 ALEC COAT LONG LS M WHITE

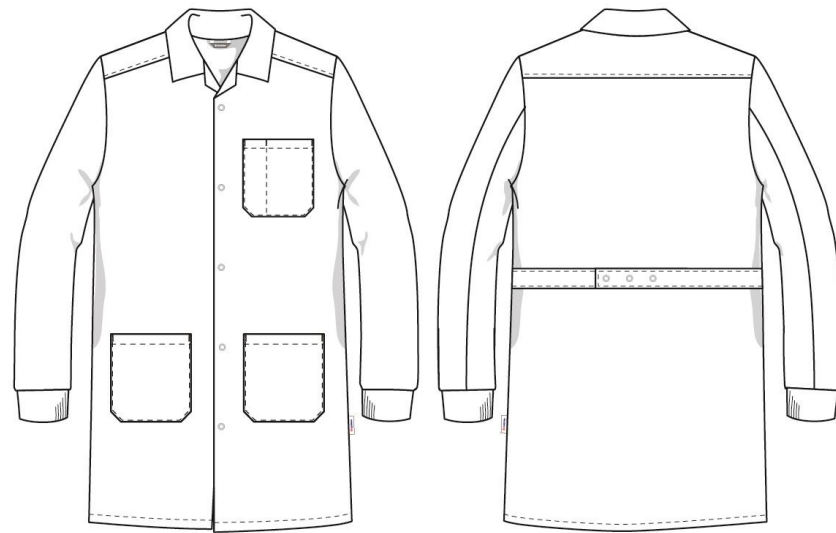
Material: Pro Twill 210

Colour: White

Size range: 42-66

Product description:

Men's long coat with fold collar. Front closure with press buttons. Patch pocket with pen pocket department on left chest. Front patch pockets. Cuffs with rib knit. Yoke at back. Adjustable back waist belt.



Ready For Sale

1F1427 ALEC COAT LONG LS M WHITE/FLY

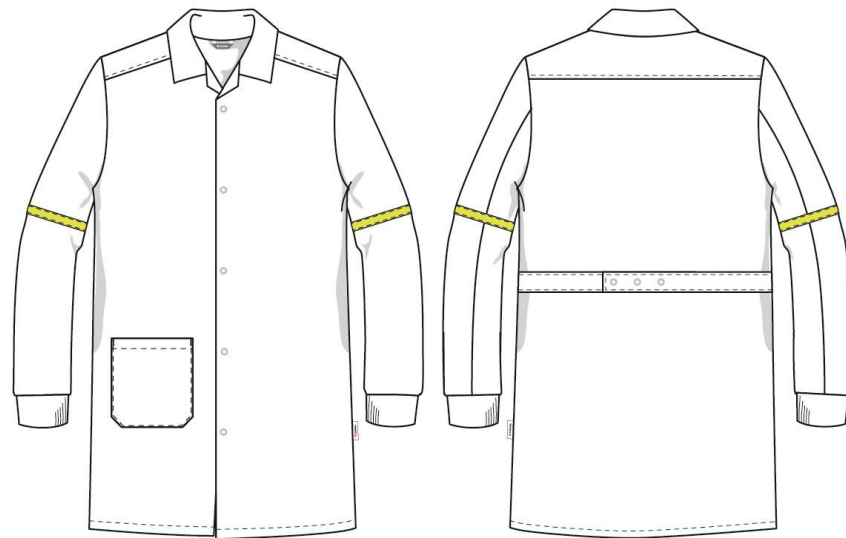
Material: Pro Twill 210

Colour: White

Size range: 42-66

Product description:

Men's long coat with fold collar. Front closure with press buttons. Front patch pocket on right side. Cuffs with rib knit. Yoke at back. Adjustable back waist belt. 20 mm Fluorescent Yellow stripe around arms.



Ready For Sale

1V4556

ALEC COAT SHORT LS M

PALE GREY

Material: Pro Twill 245

Colour: Pale Grey

Size range: 42-66

Product description:

Men's short coat with long sleeves. Opening with hidden push buttons. Straight sleeve opening, adjustable by push buttons.

Ready For Sale



1V7473

ALEC COAT LONG LS M

CHARCOAL/FLY

Material: Pro Outdoor 235

Colour: Charcoal / FLY

Size range: 42-66

Product description:

Men's long coat with folded collar. Front with hidden press buttons.

Sleeve opening with cuffs and slit, velcro adjustment.

2 breast pockets - hidden press buttons at pocket flaps, pen pocket at left side. Side pockets. 50mm reflective bands.

Ready For Sale



1V5539

ALEC COAT LONG LS M

PALE GREY

Material: Pro Twill 245

Colour: Pale Grey

Size range: 42-66

Product description:

Men's long coat with long sleeves. Opening with hidden push buttons. Straight sleeve opening, adjustable by push buttons.

Ready For Sale



1V6088 ALEC COAT SHORT M CONVOY

Material: Pro Twill 245

Colour: Convoy

Size range: 42-66

Product description:

Men's short coat with long sleeve. Hidden press buttons. Inside chest pocket at left. Sleeve end finished with knitted cuffs.



Ready For Sale

1V6089 ALEC COAT EXTRA LONG M CONVOY

Material: Pro Twill 245

Colour: Convoy

Size range: 42-66

Product description:

Men's long coat with long sleeve. Hidden press buttons. Inside chest pocket at left. Sleeve end finished with knitted cuffs.

Ready For Sale



1L7946

ALEC COAT SHORT LS M

CONVOY

Material: Pro Twill 245

Colour: Convoy

Size range: 42-66

Product description:

Men's short coat. Hidden ring press button closure in front with top push button. Straight sleeve opening, adjustable by push buttons. Flap pockets on lower part.

Ready For Sale



1V7856

ALEC COAT LONG LS M

NAVY

Material: Pro Shirt 150

Colour: Navy

Size range: 42-66

Product description:

Men's long coat with long sleeve. Front closure with hidden ring press buttons. Pockets in side seams. Sleeve end adjustment with ring press buttons.

Ready For Sale



1F0168 ALEC COAT M NSO

Material: Pro Twill 245

Colour: New Seville Orange

Size range: 42-66

Product description:

Men's long coat with long sleeve. Hidden press buttons till top.
1 patch pocket at left chest inside, side pocket only on right side.
Straight sleeve opening, adjustable by press buttons.



Ready For Sale

1F2081 ALEC COAT EXTRA LONG LS M NSO

Material: Pro Twill 245

Colour: New Seville Orange

Size range: 42-66

Product description:

Men's extra long coat with long sleeves. Fastening with hidden press buttons. Adjustment with press buttons on sleeve ends.



1F0376 ALEC COAT M NAVY

Material: Pro Twill 245

Colour: Navy

Size range: 42-66

Product description:

Men's long coat with long sleeves. Hidden press buttons till top.
1 patch pocket at left chest inside. Straight sleeve opening, adjustable
by press buttons.

Ready For Sale



1F0332

ALEC COAT LONG LS M

ROYAL BLUE

Material: Pro Twill 245

Colour: Royal Blue

Size range: 42-66

Product description:

Men's long coat with long sleeve. Press buttons. Straight sleeve opening, adjustable by press buttons.



Ready For Sale

8008 HANS TROUSERS M

Material: Pro Twill 245

Colour: Royal blue, Bottle green

Size range: 42-66

Product description:

Product update 07/2013. New pattern and fit. No pleats at front.
Hidden waist button. 1 patch pocket at back

Best Seller



8108

1F0354

HANS TROUSERS M

Material: Pro Twill 245

Colour: Navy, Black, Convoy

Size range: 42-66

Product description:

Men's trousers. No pleats at front. Belt loops. Side pockets. 2 leg pockets, 2 push buttons at pocket flaps. Reinforced bottoms at leg pockets. Reflective band at legs.



Ready for Sale

1V0733 HANS TROUSERS M

Material: Pro Twill 245

Colour: Red

Size range: 42-66

Product description:

Men's trousers with zipper fly. Waist closure with hidden jeans button.

Ready For Sale



1L4108

HANS TROUSERS M

Material: Pro Twill 210

Colour: Khaki

Size range: 42-66

Product description:

Men khaki trousers. Straight leg ends. Jeans button closure on waist and zipper on fly. Belt loops on waist. Bottom side pockets. Patch pockets with flap and press buttons, reinforced bottom.

Ready For Sale



1L2470 HANS TROUSERS M

Material: Pro Twill 245

Colour: Navy

Size range: 42-66

Product description:

Dark blue man's trousers. Hidden jeans button and zipper on closure. Bottom side pockets on front, patch pocket on back at right. Loops for belt on the waist.

Ready For Sale



1V0200

HANS TROUSERS M NAVY

Material: Pro Twill 245

Colour: Navy

Size range: 42-66

Product description:

Men's trousers with zipper fly and hidden jeans button, belt loops on waist. Side pockets. Knife pocket at right back.

Ready For Sale



1L8583 HANS TROUSERS M

Material: Pro Twill 210

Colour: Black

Size range: 42-66

Product description:

Men's trousers. Side pockets. Left side a leg pocket with reinforced bottom. Two hidden press buttons at pocket flap. Adjustable elastic band at waist back. Belt loops. Hidden button closure and zipper at front. Straight leg.

Ready For Sale



1L7317 HANS TROUSERS M

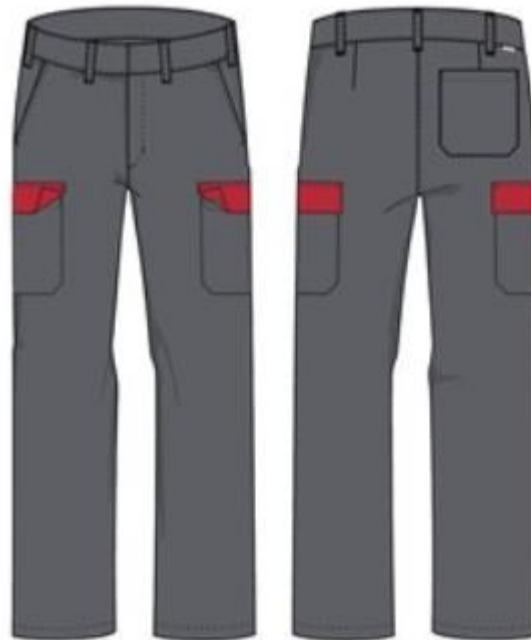
Material: Pro Twill 245

Colour: Convoy / Red

Size range: 42-66

Product description:

Men's trousers with zipper fly and hidden jeans button on waist. Side pockets. Flap pockets with velcro at legs. At the left leg 2 compartments at the pocket.



Ready For Sale

18845 HANS TROUSERS M

Material: Pro Twill 245

Colour: Black

Size range: 42-66

Product description:

Men's trousers. Hidden waist button. Side pockets. Belt loops at waist.

Ready For Sale



1L1769

HANS TROUSERS M

Material: Pro Twill 245

Colour: Red

Size range: 40-62

Product description:

Waist closure with hidden jeans button.

Side pockets.

Double flap pocket on right thigh with hang loops, reinforced bottom, 2-n top stitching and hidden push button on flap.

Patch pocket on right back.



Ready For Sale

1L3175 HANS TROUSERS M

Material: Pro Twill 245

Colour: Convoy

Size range: 40-62

Product description:

Men's trousers with flat front. Zip fly and jeans buttons at waist. Belt loops. Plain side pockets and one patch pocket at back.

Ready For Sale



1V2222

HANS TROUSERS M

CONVOY

Material: Pro Co Rich 245

Colour: Convoy

Size range: 42-66

Product description:

Men's trousers. No pleats at front. Belt loops. Side pockets. 2 leg pockets, 2 push buttons at pocket flaps. Reinforced bottoms at leg pockets.

Ready For Sale



1L3618 HANS TROUSERS M

Material: Pro Twill 210

Colour: Black

Size range: 42-66

Product description:

Men's trousers with jeans buttons, belt loops, side pockets and two leg pockets.

Ready For Sale



1V8685

HANS TROUSERS M BLACK

Material: Pro Stretch 220

Colour: Black

Size range: 42-66

Product description:

Men's black cargo trousers. Leg pockets, side pocket on waist and one layered knee pad pockets. Belt loops. Mobile phone pocket over the right leg pocket. Adjustable elastic band at leg openings.

Ready For Sale



1V4254

HANS TROUSERS M

Material: Pro Stretch 220

Colour: Black

Size range: 42-66

Product description:

Men's black cargo trousers. Leg pockets, side pocket on waist and one layered knee pad pockets. Belt loops. Mobile phone pocket over the right leg pocket.

Ready For Sale



1V0839

HANS TROUSERS M BLACK

Material: Pro Twill 210

Colour: Black

Size range: 42-66

Product description:

Men's trousers. Straight leg. Closure with zipper and metal button at front. Belt loops. Side pockets and leg pockets, the right side pocket has pen pocket included. Adjustable rubber band at front waist.

Ready For Sale



1L3940

HANS TROUSERS M

Material: Pro Twill 245

Colour: Black / New Seville Orange

Size range: 42-66

Product description:

Men's trousers. Belt loops. Side pockets. 2 leg pockets, different colored flaps with 2 push buttons. Reinforced bottoms at leg pockets. At left leg pocket with phone pocket. Patch pocket at left back and flap pocket at right back. 20 mm reflective band on legs.

Ready For Sale



1V1739

HANS TROUSERS M

NAVY/FLO

Material: Pro Twill 245, Pro Outdoor 235

Colour: Navy / Fluorescent Orange

Size range: 42-66

Product description:

Men's navy blue trousers with fl orange contrast panel in both legs. patch pocket in back, reinforced leg pockets with fl orange flaps. Side pockets and belt loops in the waist.

Ready For Sale



1L5931 HANS TROUSERS M

Material: Pro Twill 210

Colour: Brown

Size range: 42-66

Product description:

Men's trousers. Side pockets and belt loops.

Ready For Sale



1L7464 HANS TROUSERS M

Material: Pro Twill 245

Colour: Bottle Green

Size range: 42-66

Product description:

Men's trousers. Belt loops. Side pockets. 2 leg pockets, 2 push buttons at pocket flaps. Reinforced bottoms at leg pockets. Patch pocket at right back

Ready For Sale



41361 HANS TROUSERS M

Material: Pro Twill 245

Colour: Graphite

Size range: 42-66

Product description:

Men's trousers with side pockets. Two leg pockets with push buttons at pocket flaps. Reflective bands at the legs.

Ready For Sale



41720 HANS TROUSERS M

Material: Pro Twill 210

Colour: Navy

Size range: 38-58

Product description:

Men's basic trousers. Side pockets, belt loops, straight leg end. Waist adjustment with rubber band. Fastening with hidden button. List pocket on right back.

Ready For Sale



1L0567 HANS TROUSERS M

Material: Pro Twill 245

Colour: Graphite

Size range: 46-60

Product description:

Men's trousers with side pockets. Thigh pockets and flap with snap buttons on sides. Patch pocket at back.

Ready For Sale



1V6987

HANS TROUSERS M SILVER GREY

Material: Pro Tencel 190

Colour: Graphite

Size range: 46-60

Product description:

Men's trousers. Zipper fly and concealed button closure in the waist. Side pockets and belt loops. Leg pockets with concealed snap button closure. Attached ID-card pocket on the top of the left leg pocket.

Ready For Sale



1L0058 HANS TROUSERS M

Material: Pro Twill 245

Colour: Royal blue

Size range: 42-66

Product description:

Men's trousers. Concealed jeans button on waist. 7 belt loops. Side pockets. One back pocket on right. 20mm reflective band on bottom pant legs.

Ready For Sale



40013 HANS TROUSERS M

Material: Pro Twill 245

Colour: Royal Blue

Size range: 42-66

Product description:

Men's trousers blue. Hidden jeans button on waist.

Side pockets, one back pocket on right. On legs two cargo pockets with flaps.

Ready For Sale



1V3461

HANS TROUSERS M ROYAL BLUE

Material: Pro Co Rich 315

Colour: Royal Blue

Size range: 42-66

Product description:

Men's trousers blue. Hidden jeans button on waist. Front side pockets, 1 patch pocket at right back.

Ready For Sale



1L0828 HANS TROUSERS M

Material: Pro Twill 210

Colour: Navy

Size range: 42-64

Product description:

Men's basic trousers. Side pockets, belt loops, straight leg end.
Fastening with hidden button.

Ready For Sale



1V7969

HANS TROUSERS M NAVY

Material: Pro Twill 245

Colour: Navy

Size range: 42-64

Product description:

Men's basic trousers without pockets, belt loops, straight leg end.
Fastening with hidden button.

Ready For Sale



1V9873

HANS TROUSERS M

NAVY/FLY

Material: Pro Twill 245

Colour: Navy

Size range: 42-64

Product description:

Men's trousers. No pleats at front. Belt loops. Side pockets. 2 leg pockets, 2 push buttons at pocket flaps. Reinforced bottoms at leg pockets.

Ready For Sale



1V2525 HANS TROUSERS M

Material: Pro Twill 245

Colour: Convoy

Size range: 42-64

Product description:

Men's trousers with beltloops. Side pockets, two patch pockets on back - right pocket with flap and press buttons. Leg pocket with flap on left side with phone and pen compartments, knife pocket on right. Two level knee pockets. 50 mm reflective bands around legs.

Ready For Sale



1V0218

HANS TROUSERS M

Material: Pro Stretch 220

Colour: Charcoal / Black

Size range: 42-64

Product description:

Men's trousers. Belt loops on the waistband. Zipper and jeans button on front fastening. Side pockets, back pockets with flaps and press buttons. Leg pocket on the left with flap and press button fastening. Phone pocket with velcro fastening and pen pocket on top of the leg pocket. Ruler pocket with reinforced bottom on the right side.

Jeans button and hammer loop on top of the ruler pocket. Reflecting bands 20mm on the legs.

Ready For Sale



1V2656 HANS TROUSERS M

Material: Pro Outdoor 235

Colour: Black / FLO

Size range: 42-64

Product description:

Men's trousers, side pockets, one patch pocket at back. 50 mm reflective bands around legs.

Ready For Sale



1V7123

HANS TROUSERS M WHITE

Material: Pro Twill 210

Colour: White

Size range: 42-66

Product description:

Men's trousers. Adjustable elastic band at inside waist.

Ready For Sale



1V3717

HANS TROUSERS M WHITE

Material: Pro Twill 210

Colour: White

Size range: 42-66

Product description:

Men's trousers with zipper fly, hidden jeans button on waist. Side pockets. Adjustable elastic band around waist. Flap pocket with hidden press buttons and with reinforced bottom at left leg. Knife pocket at right back.

Ready For Sale



1V4557

HANS TROUSERS M

PALE GREY

Material: Pro Twill 245

Colour: Pale Grey

Size range: 42-66

Product description:

Men's trousers with zipper fly, hidden jeans button on waist. Belt loops.

Ready For Sale



1V3096 HANS TROUSERS M WHITE

Material: Pro Twill 210

Colour: White

Size range: 42-66

Product description:

Men's trousers with zipper fly, jeans button on waist.
Knife pocket at right back.

Ready For Sale



1V3198 HANS TROUSERS M WHITE

Material: Pro Twill 210

Colour: White

Size range: 42-66

Product description:

Men's trousers with zipper fly, jeans button on waist.
Side pockets. Knife pocket at back.

Ready For Sale



1E0154

HANS TROUSERS M

WHITE

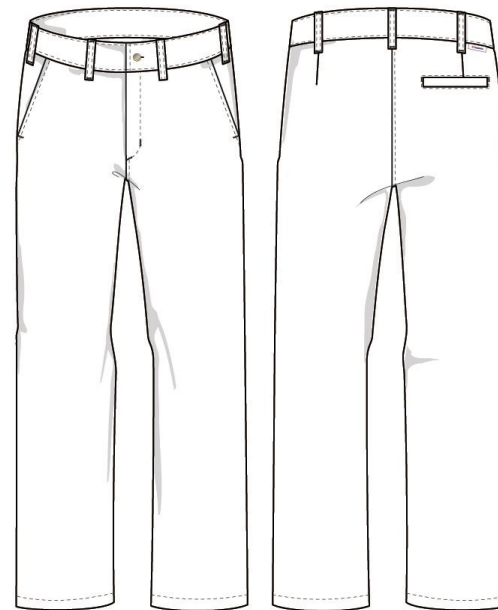
Material: Pro Co Rich 245

Colour: White

Size range: 42-66

Product description:

Men's trousers with jeans button and belt loops. Side pockets. List pocket on left back.



Ready For Sale

1V3908

HANS TROUSERS M

ROYAL BLUE

Material: Pro Twill 245

Colour: Royal Blue

Size range: 42-66

Product description:

Men's trousers with zipper fly, hidden jeans button on waist. Side pockets. Patch pocket at right back. Knife pocket at right back.

Ready For Sale



17873

HOLDEN WORKER TROUSERS M

Material: Pro Twill 245

Colour: Black, Convoy

Size range: 42-66

Product description:

Men's worker trousers. 2-level hang pockets at front, 1-level hang pockets at back. D-ring loop at front right. Large patch pockets on front, where hang pockets fit in. 1 leg pocket on left and knife pocket at trouser part. 2-level knee pockets. Reinforced pocket bottoms.

Ready For Sale



18433

1L8897 HOLDEN WORKER TROUSERS M

Material: Pro Co Rich 315

Colour: Black

Size range: 42-66

Product description:

Men's worker trousers. Zipper and jeans button at front. Side pockets. Leg pocket with phone and pen pocket with flap at left leg. Ruler pocket at right leg. Two sided knee pockets. One back pocket with flap at right.

Ready For Sale



1V1168 WORKER TROUSERS M BLACK

Material: Pro Co Rich 315

Colour: Black

Size range: 42-66

Product description:

Worker trousers with hang pockets. Hidden waist button. Hang pockets at front with versatile compartments for tools. Side pockets underneath hang pockets. D-ring loop at waist right side. Large leg & phone pocket at left, ruler pocket with knife button at right leg. Two large flap pockets at back. Hammer loop. Two level knee pockets for detachable knee pads.

Ready For Sale



1L1518 HOLDEN WORKER TROUSERS M

Material: Pro Twill 245

Colour: Convoy / FL Yellow

Size range: 36-66

Product description:

Men's worker trousers with reflecting bands. Zipper and jeans button fastening. Side pockets. Two sided knee pockets.

Ready For Sale



17775

HOLDEN WORKER TROUSERS M

Material: Pro Twill 245

Colour: Graphite

Size range: 42-66

Product description:

Front closure with zip and jeans button. Waist elastic on sides, belt loops. D-ring below waist on right side. Side pockets, back pocket on the left hand side with flap and press buttons. Thigh pocket on right hand side with phone pocket. Knee pockets with adjustable height. Reflective band on right leg

Ready For Sale



1L2730 HOLDEN WORKER TROUSERS M

Material: Pro Twill 245

Colour: Navy

Size range: 44-62

Product description:

Holden trousers navy. Side pockets. Cargo pockets with flap and hidden snap button closure, right one with phone pocket. Back pockets with flap and hidden snap buttons. Reflecting bands on legs. Reflecting piping on side seams between the cargo pockets and reflecting bands.

Ready For Sale



1L6731 HOLDEN WORKER TROUSERS M

Material: Pro Twill 245

Colour: Black

Size range: 42-66

Product description:

Men's trousers with zip fly and jeans button at waist. Belt loops and plain side pockets. Leg pocket on right with mobile phone and pen compartment. Flap pocket and ruler pocket at back. One level knee pad pockets inside legs.

Ready For Sale



1V5417

HOLDEN TROUSERS M

Material: Pro Twill 245

Colour: Charcoal

Size range: 42-66

Product description:

Men's working trousers. Zipper and jeans button at front. Side pockets. Two level knee pockets. One list pocket at back right side.

Ready For Sale



41273

HOLDEN BERMUDA TROUSERS M

Material: Pro Twill 245

Colour: Graphite

Size range: 42-66

Product description:

Front closure with zip and jeans button. Waist elastic on sides, belt loops. D-ring below waist on right side. Side pockets, back pocket on the left hand side with flap and press buttons. Thigh pocket on right hand side with phone pocket. Knee pockets with adjustable height.

Ready For Sale



1F0624

TONY TROUSERS M SILVER GREY

Material: Pro Stretch 220

Colour: Silver Grey

Size range: 42-66

Product description:

Front closure with zip and jeans button. Belt loops.

Side pockets, back pockets. Leg pockets on both sides with flaps.

Phone pocket on left side leg pocket. Leg ends with adjustable Velcro.

Ready For Sale



12092

REAL PRO TROUSERS M

Material: Pro Outdoor 245

Colour: Black

Size range: 44-66

Product description:

Men's working trousers. Belt loops and elastic band on the waist sides. D-loop at front right. Side pockets, leg pockets with flaps and Velcro closure, mobile phone pocket and patch pockets at back, one with flap closed with press buttons. Knee pockets and 20mm reflective band on the legs.

Non Platform



12096

REAL PRO WINTER TROUSERS M

Material: Pro Outdoor 235

Colour: Black

Size range: 44-66

Product description:

Men's winter trousers with wadding and lining. Front closure with a zipper and button. Belt loops on the waist and raised back. D-loop on the right front. Side pockets. Leg pockets with a flap and velcro closure, mobile phone pocket on the left leg pocket. Patch pockets on the back and the right side pocket with a flap closed with press buttons. Knee pockets. Leg bottom with zipper opening on the sides. 20mm reflective bands in leg.

Non Platform



8013

ANTTI OVERALL M

Material: Pro Twill 245

Colour: Royal blue

Size range: 42-66

Product description:

Men's overall with a folded collar. Adjustable elastic band at waist back. Hidden press buttons on front fastening. Two breast pockets, right one has flap, left one has pen department. Two patch pockets on front. Side openings. Two patch pockets on back. Knife pocket on leg left back. No hammer loop. Straight wide sleeve, adjustable by press button.

Best Seller



1V2722

ANTTI OVERALL M

Material: Pro Twill 245

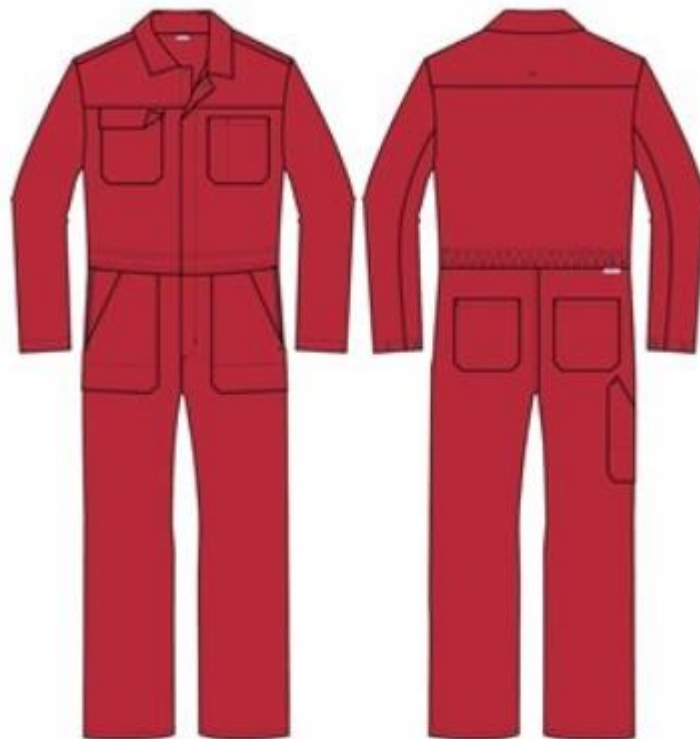
Colour: Red

Size range: 42-66

Product description:

Men's overall with a folded collar. Adjustable elastic band at waist back. Hidden press buttons on front fastening. Two breast pockets, right one has flap, left one has pen department. Two patch pockets on front. Side openings. Two patch pockets on back. Knife pocket on leg left back. No hammer loop. Straight wide sleeve, adjustable by press button.

Best Seller



18439

ANTTI OVERALL M

Material: Pro Twill 245

Colour: Black/Convoy, Convoy/Red

Size range: 42-66

Product description:

Men's overall with a folded collar. Press button closure at front. Right side breast pocket with multiple compartments, tool loops and a flap with press button closure on top covering a D-loop. Left side breast pocket with a flap closed with press buttons. Side pockets. A patch pocket with a flap closed with press buttons on the left leg. Right leg with a knife pocket. Reinforced bottoms on the breast pockets and the leg pocket. Two patch pockets on the back. Adjustable elastic band at waist back.



18440

18439 Best Seller. 18440 Ready For Sale

1L7468

ANTTI OVERALL M

Material: Pro Twill 245

Colour: Convoy / Red

Size range: 42-66

Product description:

Men's coverall convoy grey / red. Concealed snap button closure at front. Chest pocket on right with tool loops and snap button closure. Swing pockets on lower-front. One patch pocket on the back. Adjustable elastic band inside back waist.



Ready For Sale

1L4742

ANTTI OVERALL M

Material: Pro Twill 245

Colour: Black / Convoy

Size range: 44-66

Product description:

Overall with zipper front opening hidden by front list. Two chest pockets with flaps and hidden snap buttons. Left pocket with reinforced bottom and a phone pocket. Right pocket with pen stitching D-ring under flap. Adjustable elastic band at waist back. Side pockets. A reinforced bottom patch pocket with a flap closed with hidden press buttons on the left leg. Right leg with a knife pocket. patch pockets at back. 2-level knee pockets with Velcro at the opening. Reflectives at sleeves, back yoke and legs. Side openings.

Ready For Sale



1L6730 ANTTI OVERALL M

Material: Pro Twill 245

Colour: Black / Convoy

Size range: 42-66

Product description:

Men's overall with fold collar and concealed push button fastening on front. Flap pockets on chest with push button closure. Plain side pockets. Opening at both sides. Sleeve cuffs with slit and push button adjustment. Two back pockets, flap on right. Ruler pocket. Adjustable elastics inside back waist. Internal 2-level kneepad pockets.

Ready For Sale



1L7268 ANTTI OVERALL M

Material: Pro Co Rich 315

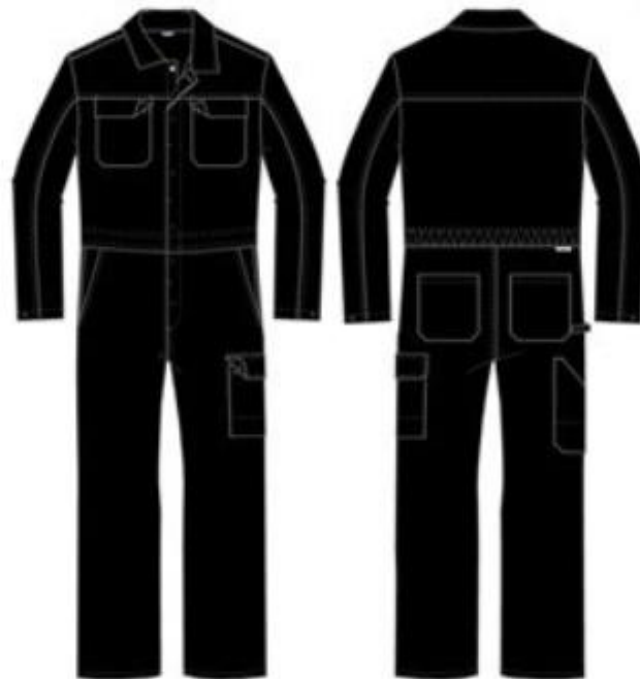
Colour: Black

Size range: 42-66

Product description:

Men's overall with a folded collar. Adjustable elastic band at waist back. Hidden press buttons on front fastening. Two breast pockets. Two patch pockets on back.

Ready For Sale



41159

ANTTI OVERALL M

Material: Pro Twill 245

Colour: Black / Convoy

Size range: 42-66

Product description:

Men's overall with a folded collar. Concealed press button closure at front. Right side breast pocket with multiple compartments, tool loops and a flap with press button closure on top covering a D-loop. Left side breast pocket with a flap closed with hidden press buttons. Side pockets. A patch pocket with a flap closed with hidden press buttons on the left leg. Right leg with a knife pocket. Reinforced bottoms on the breast pockets and the leg pocket. Two patch pockets on the back. Adjustable elastic band at waist back.

Ready For Sale



41353

ANTTI OVERALL M

Material: Pro Twill 245

Colour: Charcoal / Convoy

Size range: 42-66

Product description:

Stand collar with front list. Hidden press button closure and zipper. 2 flap pockets on chest with top pocket and Velcro closure. Piping on chest and back. Cuffed sleeve opening and Velcro adjustment. Side pockets. Flap pocket with Velcro closure on left leg. Knee pockets. Adjustable elastic band at inside back waist. 2 patch pockets on back.

Ready For Sale



1V3403

CE HI-VIS OVERALL CL3

Material: Pro Outdoor 235

Colour: Fluorescent Yellow / Navy

Size range: 42-66

Product description:

EN ISO 20471:2013, class 3

High Visibility overall with stand collar. Cover list on top of the zipper with hidden press buttons. Versatile pockets at chest, e.g enough space for mobile phone and pens. One chest pocket with zipper closure. Easy access inside overall next to side pockets. Adjustable waist width inside. D-ring loop at waist front. Detachable ID-card pocket with velcro and press button at left hand sleeve. Sleeve end adjustment with Velcro. Large leg pockets at both sides. Back pockets. 2-level knee pockets inside.

Please note that alterations are limited for the CE marked protective clothing - level of protection shall not be reduced. Our customer service will gladly help you with any questions.

Ready For Sale



8044

KARI BIB & BRACES M

Material: Pro Twill 245

Colour: Royal blue, Bottle green, Black, Convoy, Red

Size range: 42-66

Product discription:

Men's bib and braces. Adjustable elastic band at waist back. Adjustable brace length. Zipper under placket at front. Closure opening at one side with hidden buttons. No hammer loop. Reinforced patch pockets at front. 2 patch pockets at back and a knife pocket. Flap pocket with a press button and pen pocket at bib part.

8044, 8144, 8101, 8103 Best Seller. 8244 Ready For Sale



8144



8101



8103



8244

1L0998

KARI BIB & BRACES M

Material: Pro Twill 245

Colour: Charcoal / Navy

Size range: 42-62

Product discription:

Adjustble braces with plastic buckles, elastic band at back.

Side closure at left with hidden jeans buttons. Adjustable elastic band inside back waist. Chest pocket with pen stitching and flap with hidden snap button fastening. Patch pockets on lower front with reinforcement at lower part of the pocket. Two patch pockets at back. Ruler pocket on left leg.

Ready For Sale



1L3133

KARI BIB & BRACES M

Material: Pro Twill 245

Colour: Royal Blue

Size range: 44-60

Product discription:

Kari BiB & BRACES. Color Royal blue. Only pockets are cargo pockets on both legs with flap and visible press button fastening (1 button).

Ready For Sale



1L3280

KARI BIB & BRACES M

Material: Pro Twill 245

Colour: Navy

Size range: 42-66

Product discription:

Men's bib and braces. Adjustable elastic band inside back waist. Adjustable braces with plastic buckle, elastic band at back. Chest pocket with pen stitching, flap with hidden press button. Closure at left side with hidden jeans buttons. Two patch pockets on lower front. Hammer loop on left side. Two patch pockets at back, the one on right side has flap and snap button closure. Ruler pocket on right leg.

Ready For Sale



1L3875

KARI BIB & BRACES M

Material: Pro Twill 245

Colour: Royal Blue / FL Yellow

Size range: 42-66

Product discription:

Men's bib and braces with flap pocket on front and with reflecting bands.

Ready For Sale



41041

KARI BIB & BRACES M

Material: Pro Twill 245

Colour: Navy / Royal Blue

Size range: 46-64

Product discription:

Men's bib & braces. Pocket on upper part. Flap closure with 1 hidden snap button. White piping on edge of the flap. Side pockets, cargo pocket on left leg. Flap with white piping on edge and 1 snap button closure. Adjustable elastic band on back waist

Ready For Sale



41189

KARI BIB & BRACES M

Material: Pro Twill 245

Colour: Royal Blue

Size range: 42-66

Product discription:

Adjustable elastic braces with plastic clip fastening. Flap pocket with press button closure and pen pocket on chest. Side closure with buttons. Adjustable elastic band at back inside waist. Zipper on front.

Two bottom side patch pockets. Back patch pocket with flap and press button closure on right side. Back patch pocket on left side.

Hammer loop on left side. Knife pocket on right side.

Ready For Sale



1L0566

KARI BIB & BRACES M

Material: Pro Twill 245

Colour: Graphite

Size range: 48-58

Product discription:

Men's bib & braces with flap pocket at front, with hidden push button and pen pocket stitching. Patch pockets at sides. Adjustable elastic band at waist back. Knife pocket and 2 patch pockets at back.

Ready For Sale



40014

KARI BIB & BRACES M

Material: Pro Twill 245

Colour: Royal Blue

Size range: 42-66

Product discription:

Men's b&b blue. Hidden jeans button closure on left side.

Adjustable elastic band in back waistband. Pocket with pen compartment and flap on bib. Side patch pockets, with reinforcement bottoms. On left leg one cargo pocket with flap and on right leg back a knife pocket.

Ready For Sale



1L3133

KARI B&B M ROYAL BLUE

Material: Pro Twill 245

Colour: Royal Blue

Size range: 44-60

Product discription:

Kari bib&braces. Color Royal blue. Only pockets are cargo pockets on both legs with flap and visible press button fastening (1 button).

Ready For Sale



40473

KARI BIB & BRACES M

Material: Pro Outdoor 235

Colour: Graphite / FL Orange

Size range: 42-66

Product discription:

Adjustable elastic braces with plastic fastening. Side closure with press buttons. Adjustable elastic band at back inside waist.

Flap pocket with pen pocket and hidden press button closure on chest. Zipper on front. Two bottom side patch pockets. Knee pockets. Two back patch pockets.

Ready For Sale



1V0702

KARI BIB & BRACES M

Material: Pro Twill 245

Colour: Convoy

Size range: 42-66

Product discription:

Men's bib and braces. Adjustable elastic band at waist back. Adjustable brace length. Zipper under placket at front. Closure opening at one side with hidden buttons. 2 side pockets at front, 2 patch pockets at back and a knife pocket. Leg pocket with flap on left side with phone and pen pocket section. Flap pocket with press buttons and pen pocket at bib part. Reflective bands below knee pads.

Ready For Sale



1V6165

KARI BIB & BRACES M

Material: Pro Twill 245

Colour: Navy / Convoy

Size range: 42-66

Product discription:

Men's bib and braces. Adjustable elastic band at waist back. Adjustable brace length. Zipper under placket at front. Closure opening at one side with buttons. Side pockets. 2 patch pockets with flap and press buttons at back and one pocket on leg. Pocket with zipper closure and pen pocket at bib part. Inside knee pocket.

Ready For Sale



1L0059

KARI BIB & BRACES REF M

Material: Pro Twill 245

Colour: Royal blue

Size range: 42-66

Product description:

Men's bib & braces. Hidden buttons on left side. Zipper at front. Adjustable elastic band on back waist. Breast pocket at front with a pen compartment and flap with a hidden press button closure. Patch pockets at front that are enhanced on their lower part and two back pockets. 20mm reflecting band on bottom pant legs.

Ready For Sale



1L5038

KARI BIB&BRACES M

ROYAL BLUE

Material: Pro Twill 245

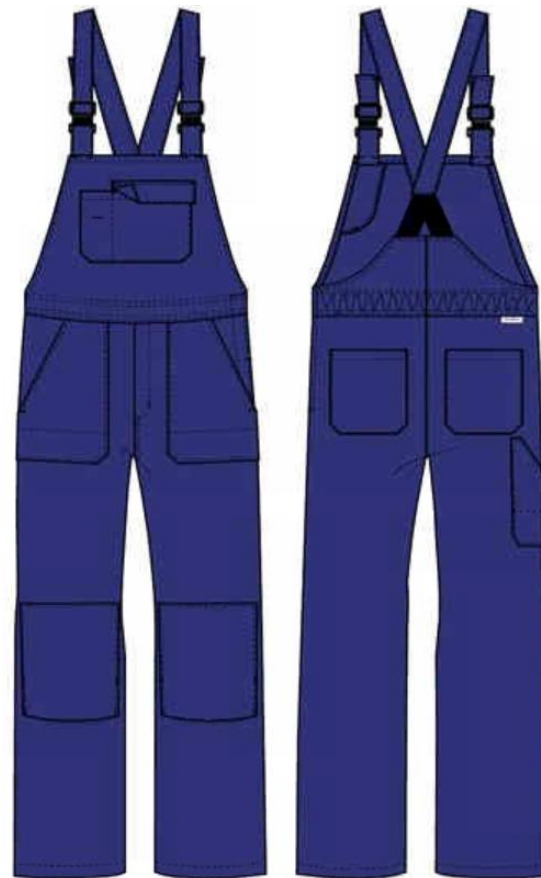
Colour: Royal blue

Size range: 42-66

Product description:

Men's bib and braces. Adjustable elastic band at waist back. Adjustable brace length. Zipper under placket at front. Closure opening at one side with hidden buttons. No hammer loop. Reinforced patch pockets at front. 2 patch pockets at back and a knife pocket. Flap pocket with a press button and pen pocket at bib part. Knee pad pockets.

Ready For Sale



1L1526

KARI B&B M CONVOY/FLY

Material: Pro Twill 245

Colour: Royal blue

Size range: 42-66

Product description:

Men's bib and braces. Adjustable elastic band at waist back. Adjustable elastic braces with plastic clip fastening. Zipper at front. Side closure on left side with hidden buttons. Two side pockets at front, two patch pockets at back, right side with flap and a knife pocket. Leg pocket at left with flap with phone and pen pocket section. Flap pocket with press buttons and pen pocket at bib part. 50 mm reflective bands below 2-level knee pad pockets.

Ready For Sale



1V7967

KARI BIB & BRACES M

NAVY

Material: Pro Twill 245

Colour: Navy

Size range: 42-66

Product description:

Men's bib and braces. Adjustable elastic band inside back waist. Adjustable braces with plastic buckle, elastic band at back. Closure at left side with jeans buttons. Two patch pockets on lower front. Hammer loop on left side. Two patch pockets at back, the one on right side has flap and snap button closure. Ruler pocket on right leg.buttons.

Ready For Sale



1V9874

KARI BIB & BRACES M

NAVY/FLY

Material: Pro Twill 245

Colour: Navy

Size range: 42-66

Product description:

Men's bib and braces. Adjustable elastic band at waist back. Adjustable brace length. Zipper under placket at front. Closure opening at one side with hidden buttons. No hammer loop. Reinforced patch pockets at front. 2 patch pockets at back. Flap pocket with a press button and pen pocket at bib part.

Ready For Sale



1V7626

KARI BIB & BRACES M

BOTTLE GREEN/FLY

Material: Pro Twill 245, Pro Outdoor 235

Colour: Bottle green, fluorescent yellow

Size range: 42-66

Product description:

Men's bib and braces. Adjustable elastic band at waist back. Adjustable brace length. Zipper under placket at front. Closure opening at one side with hidden buttons. Reinforced patch pocket at front with pen pocket department. Pocket flap with hidden snap button closure. 2 patch pockets at back and a knife pocket. Flap pocket with pen pocket at bib part. Double 50 mm fluorescent yellow stripes around legs. 20 mm reflective band on top of FI yellow band.

Ready For Sale



1V4080

CE FR MULTIPRO B&B

Material: FR Multipro Heavy Duty 350

Colour: Navy / FLY

Size range: 42-66

Product description:

EN ISO 11612:2015, A1 B1 C1 F1

EN 1149-5:2008

IEC 61482-2:2009 Class 1 (4kA), ATPV 13 cal/cm²

EN ISO 11611:2015, A1 Class 1

Flame retardant & antistatic bib & braces. Suitable for ATEX environments. Flap pocket at bib. Adjustable brace length and waist width at back. Leg pocket at left, ruler pocket at right leg. Two flap pockets at back. Two level inside knee pockets for detachable knee pads. Fluorescent yellow color panel at legs. 20 mm FR reflective band around right leg.

Please note that alterations are limited for the CE marked protective clothing - level of protection shall not be reduced. Our customer service will gladly help you with any questions.

Ready For Sale



1V3766

CE FR WELDERPRO B&B

CHARCOAL

Material: Welder Pro 420

Colour: Charcoal

Size range: 42-66

Product description:

EN ISO 11612:2015, A1 B1 C1 E3 F1

EN ISO 11611:2015, A1 class 2

Flame retardant bib & braces for protection against heat and flame and for use in welding and allied processes. Adjustable shoulder straps with elasticity on the back. Adjustable waist. Concealed press buttons under the front placket. Two chest pockets. Large side and back pockets. Reinforced ruler pockets at both sides. Two leveled knee pockets inside for knee pads.

Please note that the certified products have limited abilities for alterations. Our customer service will gladly help you with any questions.

Ready For Sale



1V7731

CE FR WELDERPRO B&B

Material: Welder Pro 420

Colour: Black

Size range: 42-66

Product description:

EN ISO 11612:2015, A1 B1 C1 E3 F1

EN ISO 11611:2015, A1 class 2

Flame retardant bib & braces for protection against heat and flame and for use in welding and allied processes. Adjustable shoulder straps with elasticity on the back. Adjustable waist. Concealed press buttons under the front placket. Two chest pockets. Large side and back pockets. Reinforced ruler pockets at both sides. Two leveled knee pockets inside for knee pads.

Ready For Sale



1L1387

MIKE DUNGAREES M

Material: Pro Twill 245

Colour: Royal blue, Black/Grey

Size range: 42-66

Product description:

Front fastening with zipper and panel with hidden press buttons. Elastic mesh on the back. Adjustable elastic band on waist. Right breast pocket with flap and hidden press buttons. Left breast pocket with a pen pocket. Side pockets. Patch pocket on back left side, patch pocket with lap and hidden press buttons on the right side. On right thigh reinforced ruler/knife pocket. Knee pockets.

Ready For Sale



2934



17872

1L1700 MIKE DUNGAREES

Material: Pro Twill 245

Colour: Navy

Size range: 42-66

Product description:

Zipper fastening and flap with Velcro on front. Right chest pocket with flap + Velcro. D-ring under the flap. Patch pocket on left chest. Side pockets. Right back pocket with flap + Velcro. Left back pocket is open patch pocket. Left leg pocket with flap + Velcro. Right leg with ruler pocket. Belt loops. Adjustable rubber band inside the waistline. 2-level outside pockets for kneepads.

Ready For Sale



1L2518

MIKE DUNGAREES M

Material: Pro Twill 245

Colour: Bottle Green / FL Yellow

Size range: 46-58

Product description:

Men's dungarees with zipper closure and hidden buttons. Elastic mesh on the back. Adjustable elastic band on waist.

Ready For Sale



1L5611

MIKE DUNGAREES M

Material: Pro Outdoor 235

Colour: Charcoal / New Seville Orange

Size range: 42-64

Product description:

Dungarees with hidden snap button front list. Zipper under list. Two chest pockets with flaps with hidden snap buttons. Right pocket with phone pocket, left pocket with pen stitching. At left leg a patch pocket with flap and hidden snap buttons. At right leg a knife pocket. Flap pocket with hidden snap buttons at right, at left a patch pocket. 2-level knee pockets. Adjustable elastic band at waist back. Deeper side pocket bags. Side openings.

Ready For Sale



1V5810 MIKE DUNGAREES M

Material: Pro Twill 245

Colour: Royal Blue / New Seville Orange

Size range: 42-64

Product description:

Dungarees with possibility to adjust back length in shoulder seam. Cover list on top of the zipper. Mesh knit at back and shoulders. 2 breast pockets with zipper closure, one with pen compartments. Side pockets. 2 patch pockets at back. A knife pocket on right leg, patch pocket on left leg. Adjustable waistband elastication at back waist.

Ready For Sale



1V7888

MIKE DUNGAREES NAVY

Material: Pro Twill 245

Colour: Navy

Size range: 42-64

Product description:

Mens dungarees with front list, velcro closure and zipper. 2 breast pockets with reinforced bottom. Right patch pocket with a smaller pocket, pen compartment and tool loops. Left pocket with reinforced bottom. Flaps with velcro closure. Front side pockets. Two patch pockets at back, right flap with velcro closure. Leg pocket with reinforced bottom, flap with velcro closure. on left. Knife pocket on right. 1-level knee pockets. Mesh in the upper back part. 20 mm reflecting bands on legs.

Ready For Sale



17958 RINA TUNIC LS W

Material: Pro Twill 245

Colour: Royal blue, Bottle green, Convoy/Red

Size range: 32-54

Product description:

Women's long sleeve tunic. Close fit. Press buttons at front.
Adjustable sleeve opening with press buttons. 2 patch pockets at
bottom. Low stand up collar.

17958 Best Seller. Ready For Sale



18445



18441

1L5118

RINA TUNIC LS W

Material: Pro Twill 245

Colour: Navy

Size range: 32-56

Product description:

Women's long sleeve tunic. Close fit. Hidden press buttons at front. Adjustable sleeve opening with press buttons. 2 patch pockets at bottom. Low stand up collar.

Ready For Sale



1L1146

RINA TUNIC LONG W LS

Material: Pro Twill 245

Colour: Graphite / Charcoal

Size range: 32-56

Product description:

Women long coat with long sleeves. Push button closure. New fit. Side list pockets. Straight sleeve opening. Back waist belt with push buttons.

Ready For Sale



1L1136

RINA TUNIC LS W

Material: Pro Twill 210

Colour: Navy / Peacock

Size range: 32-56

Product description:

Long sleeves, slits on sleeve ends. Stand up collar. Hidden press buttons at front. List pockets on left chest and bottom.

Ready For Sale



1L2069 RINA TUNIC LS W

Material: Pro Twill 245

Colour: Convoy / New Seville Orange

Size range: 32-56

Product description:

Women's tunic with low stand up collar and snap button closure. Two welt pockets on chests. Two welt pockets with snap button fastening on lower part. Snap button adjustment in sleeve ends. 20mm reflecting bands around the sleeves.

Ready For Sale



1V3201 RINA TUNIC LS W WHITE/ORANGE

Material: Pro Twill 245

Colour: White / Orange

Size range: 32-56

Product description:

Women's long sleeve tunic. Close fit. Press buttons at front.
Adjustable sleeve opening with press buttons. List pocket on left
chest. 2 list pockets at sides.



Ready For Sale

18442

MOLLY WAISTCOAT W

Material: Pro Twill 245

Colour: Black, Convoy/Red

Size range: 32-54

Product description:

Women's waistcoat. Press button closure at front. Two list pockets at front yoke, the other one with a pen pocket. Two pockets with press buttons at opening. Adjustable elastic band at back.

Ready For Sale



18443

1V5088

MOLLY WAISTCOAT W RED

Material: Pro Twill 245

Colour: Red

Size range: 32-56

Product description:

Women's waistcoat. Press button closure at front. Two list pockets at front yoke, the other one with a pen pocket. Two pockets with press buttons at opening. Adjustable elastic band at back.

Ready For Sale



16965 NORA COAT EXTRA LONG LS W

Material: Pro Twill 245

Colour: Bottle green

Size range: 32-56

Product description:

Women's extra long coat. New fit. Push button closure. 2 patch pockets. 1 breast pocket. Push buttons at sleeve opening.

Ready For Sale



1L4109

NORA COAT EL LS W ROYAL

Material: Pro Twill 245

Colour: Royal Blue

Size range: 32-56

Product description:

Women's extra long blue coat with long sleeves. One-piece folded collar with ring press button closure. Cuffs with ring press buttons, slit and pleat. Back waist belt adjustment with 3 ring press buttons. One patch pocket with pen compartment on left, two patch pockets below waist.

Ready For Sale



1L5297

NORA COAT EL LS W NAVY

Material: Pro Twill 245

Colour: Navy

Size range: 32-56

Product description:

Women's extra long navy coat with long sleeves. One-piece folded collar with press button closure. Sleeve ends with press buttons. One patch pocket with pen compartment on left, two patch pockets below waist.

Ready For Sale



1L5727

NORA COAT SHORT LS W

Material: Pro Twill 210

Colour: Black / New Seville Orange

Size range: 34-50

Product description:

Women's short coat with long sleeve. Folded collar. Press buttons. 1 patch pocket at left chest, 2 patch pockets on waist. Straight sleeve opening, adjustable by press buttons.

Ready For Sale



1L6480

NORA COAT SHORT LS W

Material: Pro Twill 210

Colour: Graphite

Size range: 32-56

Product description:

Women's short coat with long sleeve. Press button closure. New fit. 2 side pockets at side seam under the waistline, closing with press buttons. Straight sleeve opening, adjustable by press buttons.

Ready For Sale



41656

NORA COAT LS W

Material: Pro Twill 245

Colour: Graphite / Charcoal

Size range: 32-56

Product description:

Women's short coat with long sleeves. Push button closure. New fit. Chest pocket with flap and push button at left. Flap pockets with push button at side. Straight sleeve opening, adjustable by push buttons. Reflective bands at sleeves.

Ready For Sale



1V7124

NORA COAT SHORT LS W WHITE

Material: Pro Twill 210

Colour: White

Size range: 32-56

Product description:

Women's short coat with long sleeves. Push button closure. New fit. Chest pocket with flap and push button at left. Flap pockets with push button at side. Straight sleeve opening, adjustable by push buttons. Reflective bands at sleeves.

Ready For Sale



1V4560

NORA COAT SHORT LS W

PALE GREY

Material: Pro Twill 245

Colour: Pale Grey

Size range: 32-56

Product description:

Women's short coat with long sleeves.

Folded collar, hidden push button closure at front.

Straight sleeve opening, adjustable by push buttons.



Ready For Sale

1V3097 NORA COAT SHORT LS W WHITE

Material: Pro Twill 210

Colour: White

Size range: 32-56

Product description:

Women's short coat with long sleeves. Folded collar.
Push button closure at front. Inside chest pocket at left side.
Ribknit cuff at sleeve end.

Ready For Sale



1V3098

NORA COAT EXTRA LONG LS W WHITE

Material: Pro Twill 210

Colour: White

Size range: 32-56

Product description:

Women's extra long coat with long sleeves. Folded collar.
Push button closure at front. Inside chest pocket at left side.
Ribknit cuff at sleeve end.

Ready For Sale



1V5538

NORA COAT LONG LS W

PALE GREY

Material: Pro Twill 245

Colour: Pale Grey

Size range: 32-56

Product description:

Women's long coat with long sleeves. Opening with hidden push buttons. Straight sleeve opening, adjustable by push buttons.

Ready For Sale



1V7853

NORA COAT SHORT LS W WHITE

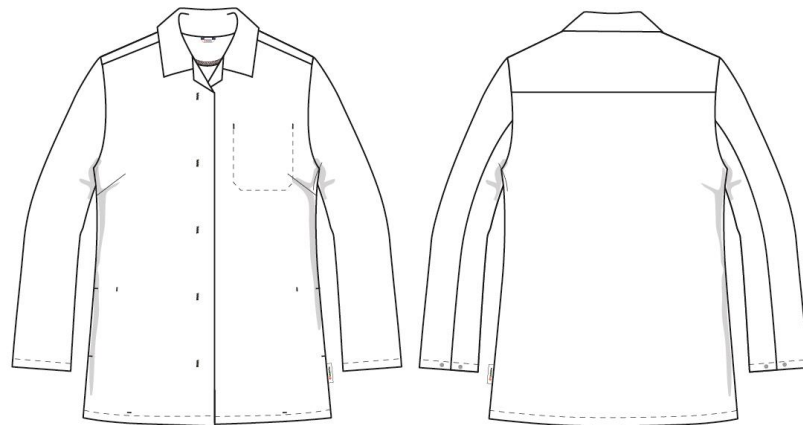
Material: Pro Shirt 150

Colour: White

Size range: 28-62

Product description:

Women's short coat. Front closure with hidden snap buttons. Wide sleeve end, hidden snap button closure. Inside pocket on left chest. Inseam pocket at both sides with hidden press button.



Ready For Sale

17959 CARLA Trousers W

Material: Pro Twill 245

Colour: Royal blue, Bottle green

Size range: 32-56

Product description:

Women's trousers. New fit, improved movement and comfortable waist and hips. Side pockets. Adjustable elastic band at inside back waist.

Best Seller



3130

1404 CARLA TROUSERS W

Material: Pro Twill 245

Colour: Navy, Black, Convoy

Size range: 32-52

Product description:

Women's trousers. No pleats at front. Side pockets. 2 leg pockets, 2 push buttons at pocket flaps. Reinforced bottoms at leg pockets. Adjustable elastic band at inside back waist.

Ready For Sale



1403



18432

41192 CARLA TROUSERS W

Material: Pro Twill 210

Colour: Black

Size range: 32-56

Product description:

Women's trousers. New fit, improved movement and comfortable waist and hips. Side pockets. Adjustable elastic band at inside back waist. Belt loops.

Best Sellers



1V0734

CARLA TROUSERS W

Material: Pro Twill 245

Colour: Red

Size range: 28-62

Product description:

Women's trousers with zipper fly. Waist closure with hidden jeans button, waist adjustment with rubber band.

Ready For Sale



1L2472

CARLA TROUSERS W

Material: Pro Twill 245

Colour: Navy

Size range: 32-56

Product description:

Lady's dark blue trousers. Loops for belt at the waist. Elastic band on the back on waist. Bottom side pockets at front. Jeans button and zipper on closure. Stright leg ends.

Ready For Sale



1L8584

CARLA TROUSERS W

Material: Pro Twill 210

Colour: Black

Size range: 32-56

Product description:

Women's trousers. Side pockets. Left side a leg pocket with reinforced bottom. Two hidden press buttons at pocket flap. Adjustable elastic band at waist back. Belt loops. Hidden button closure and zipper at front. Straight leg.

Ready For Sale



1V4255

CARLA TROUSERS W

Material: Pro Stretch 220

Colour: Black

Size range: 32-60

Product description:

Women's black cargo trousers. Leg pockets, side pocket on waist and one layered knee pad pockets. Belt loops. Mobile phone pocket over the right leg pocket. Adjustable elastic band at back waist.

Ready For Sale



1V0219

CARLA TROUSERS W

Material: Pro Stretch 220

Colour: Charcoal / Black

Size range: 32-56

Product description:

Women's trousers. Belt loops on the waistband, Adjustable elastic band at inside back waist. Zipper and jeans button on front fastening. Side pockets, back pockets with flaps and press buttons. Leg pocket on the left with flap and press button fastening. Phone pocket with velcro fastening and pen pocket on top of the leg pocket. Ruler pocket with reinforced bottom on the right side. Jeans button and hammer loop on top of the ruler pocket. Reflecting bands 20mm on the legs.

Ready For Sale



1L7318

CARLA TROUSERS W

Material: Pro Twill 245

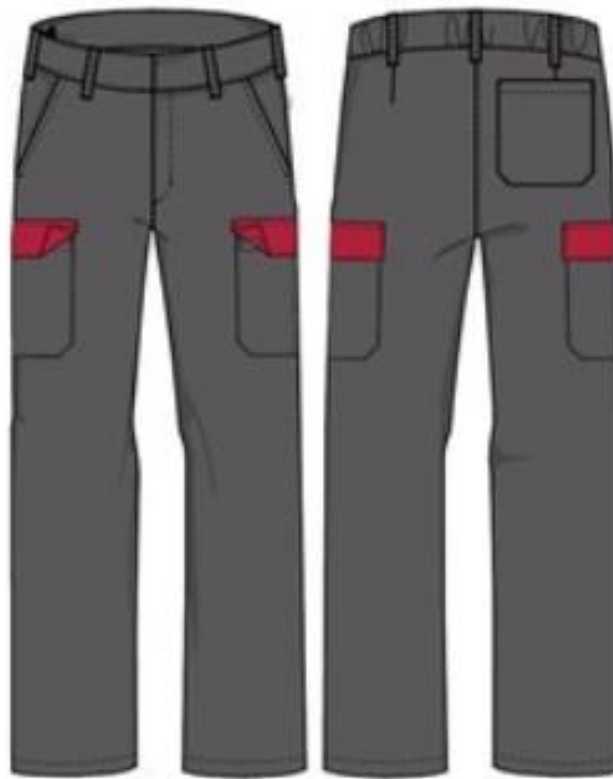
Colour: Convoy / Red

Size range: 28-62

Product description:

Women's trousers with zipper fly and hidden jeans button on waist. Side pockets. Flap pockets with velcro at legs. At the left leg 2 compartments at the pocket. Adjustable elastic band at waist back.

Ready For Sale



1L1963 CARLA TROUSERS W

Material: Pro Stretch 220

Colour: Navy

Size range: 32-56

Product description:

Women's stretch trousers with jeans button and two side pockets and back pocket.

Ready For Sale



18086

CARLA TROUSERS W

Material: Pro Twill 245

Colour: Navy

Size range: 32-56

Product description:

Women's trousers with jeans button, two side pockets, leg pockets and reflecting bands.

Ready For Sale



18846

CARLA TROUSERS W

Material: Pro Twill 245

Colour: Black

Size range: 32-56

Product description:

Women's trousers. New fit, improved movement and comfortable waist and hips. Side pockets. Adjustable elastic band at inside back waist. Belt loops.

Ready For Sale



1L4396

CARLA TROUSERS W

Material: Pro Twill 210

Colour: Graphite

Size range: 32-56

Product description:

Women's trousers with jeans button and zipper closure at front. Side pockets. Belt loops. Adjustable elastics on back waist.

Ready For Sale



41454

CARLA TROUSERS W

Material: Pro Twill 245

Colour: Red

Size range: 32-56

Product description:

Waist closure with hidden jeans button, waist adjustment with rubber band. Side pockets, D-ring inside. Double flap pocket on right thigh with hang loops, reinforced bottom, 2-n top stitching and hidden push button on flap. Patch pocket on right back.

Ready For Sale



41655 CARLA TROUSERS W

Material: Pro Twill 245

Colour: Graphite

Size range: 32-56

Product description:

Women's trousers with side pockets. Two leg pockets with push buttons at pocket flaps. Reflective bands at the legs.

Ready For Sale



41721 CARLA TROUSERS W

Material: Pro Twill 210

Colour: Navy

Size range: 32-52

Product description:

Women's basic trousers. Side pockets, belt loops, straight leg end.
Waist adjustment with rubber band. Fastening with hidden button.

Ready For Sale



1V7122

CARLA TROUSERS W WHITE

Material: Pro Twill 210

Colour: White

Size range: 28-62

Product description:

Women's trousers. Adjustable elastic band at inside waist.

Ready For Sale



1V3095

CARLA TROUSERS W WHITE

Material: Pro Twill 210

Colour: White

Size range: 32-56

Product description:

Women's trousers with zipper fly, jeans button on waist.

Adjustable elastic band at waist back. Knife pocket at right back.

Ready For Sale



1V3215

CARLA TROUSERS W WHITE

Material: Pro Twill 210

Colour: White

Size range: 32-56

Product description:

Women's trousers with zipper fly, jeans button on waist.
Adjustable elastic band at waist back. Knife pocket at right back.
Side pockets.

Ready For Sale



1V7232

BERMUDAS W

Material: Pro Twill 210

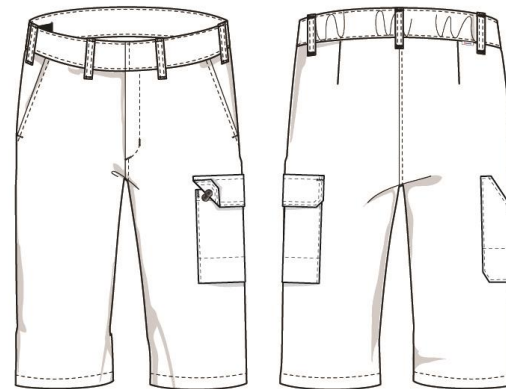
Colour: White

Size range: 32-56

Product description:

Women's bermudas with zipper fly, hidden jeans button on waist. Side pockets. Adjustable elastic band around waist.

Flap pocket with hidden press buttons and with reinforced bottom at left leg. Knife pocket at right back.



8889

OILI BIB & BRACES W

Material: Pro Twill 245

Colour: Royal blue, Bottle green

Size range: 32-56

Product description:

Women's bib and braces. Adjustable elastic band at waist back. Adjustable brace length. Closure opening at one side with hidden buttons. Reinforced patch pockets at front. 2 patch pockets at back. Flap pocket with a press button and pen pocket at bib part.

Best Seller



8189

1L7930

OILI BIB & BRACES W

Material: Pro Twill 245

Colour: Convoy

Size range: 32-56

Product description:

Women's bib and braces. Adjustable elastic band at waist back. Adjustable brace length. Closure opening at one side with hidden buttons. Reinforced patch pockets at front. 2 patch pockets at back. Flap pocket with a press button and pen pocket at bib part.

Best Seller



WorkerPro for winter

Ideal solution to all work in
cold surroundings.



With Pro
Outdoor
you always
look Pro!



The improved and test-
proven garments
suitable for continuous
work in temperatures as
low as -20 °C.

Pro Outdoor 235
70 PES/ 30 CO 235g

Pro Outdoor is excellent choice
when you need durable and good
looking material for workwear used
outdoors.

40973

ROSS WINTER COAT M

NAVY

Material: Pro Outdoor 235

Colour: Navy

Size range: 42-66

Product description:

Men's winter coat with wadding and lining. New improved fit (easy arm movement, wide back for comfortable fit). Stand up collar with warm fleece lining. Wind panel and zipper at front. Visible press buttons at front list. Sleeve end with inside rib. 1 breast pocket with zipper fastening. Large lower side pockets. Inside waistline adjustment with drawstring. 20mm reflective bands in front and back shoulder and sleeves. Placket in collar for hood fastening.

(Hood – 41455)

Ready For Sale



1L2061 ROSS WINTER COAT M BLACK

Material: Pro Outdoor 235

Colour: Black

Size range: 42-66

Product description:

Men's wadded winter coat with wadding and lining.

Stand up collar with warm fleece lining. Wind panel and zipper at front. Hidden press buttons at front list. Sleeve end with rib. 2 inlayed flap pocket with hidden press buttons in seam. Side list pockets. Inside waistline adjustment with cord. Reflective piping at front and back yoke seam. 20mm reflective bands around sleeves under elbows. Placket in collar for hood fastening.

(Hood – 1L2062)

Ready For Sale



18761

ROSS WINTER COAT M

Material: Pro Outdoor 235

Colour: White

Size range: 42-66

Product description:

With insulation. Stand up collar with front list. Fleece lining in the collar. Hood fastening list on collar. Press button closure on front. Cord adjustment at waist. Straight sleeve end with inside rib. Velcro adjustment on sleeve ends.

Hood: 1L0767

Ready For Sale



1L7350 ROSS WINTER COAT M BLACK/RED

Material: Pro Outdoor 235

Colour: Black/Red

Size range: 42-66

Product description:

Men's winter coat with wadding and lining. Stand up collar with warm fleece lining. Wind panel and zipper at front. Visible press buttons at front list. Sleeve end with inside rib. 1 breast pocket with zipper fastening. Large lower side pockets with flap and press buttons. Inside waistline adjustment with drawstring. Inside pocket with zipper on right side. 20mm reflective bands in front and back shoulders and sleeves. Placket in collar for hood fastening.

Hoods: 1V4670, 1L2062



Ready For Sale

1L0767 IVAN HOOD FOR WINTER COAT

Material: Pro Outdoor 235

Colour: White

Size range: M,L

Product description:

2-piece detachable hood. Simple front hood with cord adjustment.

Ready For Sale



40974

RYAN WINTER COAT M

NAVY

EXTRA WARM

Material: Pro Outdoor 235

Colour: Navy

Size range: 40-66

Product description:

Men's extra warm winter coat with thick wadding and lining. New improved fit (easy arm movement, wide back for comfortable fit). Stand up collar with warm fleece lining. Wind panel and zipper at front. Visible press buttons at front list. Sleeve end with inside rib. 1 breast pocket with zipper fastening. Large lower side pockets. Inside waistline adjustment with drawstring. 20mm reflective bands in front and back shoulder and sleeves. Placket in collar for hood fastening.

Hood: 41455

Ready For Sale



41455

IVAN HOOD FOR WINTER COAT

Material: Pro Outdoor 235

Colour: Navy

Size range: M

Product description:

Hood. Fastened to coat with push buttons. Drawstring adjustment in front.

Ready For Sale



1V4670 IVAN HOOD U RED

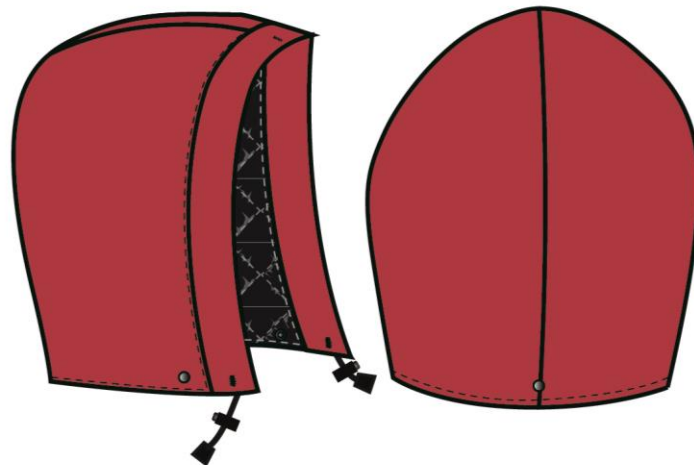
Material: Pro Outdoor 235

Colour: New Empire Red

Size range: M

Product description:

Hood. Fastened to coat with push buttons. Drawstring adjustment in front.



Ready For Sale

1L2062 IVAN HOODBLACK

Material: Pro Outdoor 235

Colour: Black

Size range: M

Product description:

Hood. Fastened to coat with push buttons. Drawstring adjustment in front.

Ready For Sale



1L0612 IVAR HOOD BOTTLE GREEN

Material: Pro Outdoor 235

Colour: Bottle green

Size range: M

Product description:

3-piece detachable hood for winter coat and jacket. Front hood with visor. Front hood adjustment with cord.

Covering neck, fastening with velcro.



Ready For Sale

1L0611

RYAN WINTER COAT M

Material: Pro Outdoor 235

Colour: Bottle Green

Size range: 44-66

Product description:

Men's winter coat with double layer of wadding insulation.

Zipper and press button closure. Side pockets with velcro closure.

Chest pocket at left side with zipper. Sleeve end with rib inside. Waist

adjustment with cord. Stand up collar with push button hood fastening.

Reflecting bands at sleeves, at front and at back.

(Hood – 1L0612)



Ready For Sale

41058

RICK WINTER JACKET

BLACK/CONVOY

Material: Pro Outdoor 235

Colour: Black/Convoy

Size range: 42-66

Product description:

Men's winter coat with wadding and lining. New improved fit (easy arm movement, wide back for comfortable fit). Stand up collar with warm fleece lining. Wind panel and zipper at front. Visible press buttons at front list. Inside pocket. Sleeve end with rib. 2 breast pockets with velcro fastening. D-ring loop for ID-cover underneath right breast pocket flap. Lower side pockets. Long hem to cover the back. Rubber band on the side of hem. 20mm reflective bands in shoulder part and sleeves.

Ready For Sale



1L3578

RICK WINTER JACKET

Material: Pro Outdoor 235

Colour: Navy

Size range: 42-66

Product description:

Men's winter coat with wadding and lining. New improved fit (easy arm movement, wide back for comfortable fit). Stand up collar with warm fleece lining. Wind panel and zipper at front. Visible press buttons at front list. Inside pocket. Sleeve end with rib. 2 breast pockets with velcro fastening. D-ring loop for ID-cover underneath right breast pocket flap. Lower side pockets. Long hem to cover the back. Rubber band on the side of hem. 20mm reflective bands in shoulder part and sleeves. Penpocket at left sleeve. Hood attachment at collar.

(Hood – 41455)

Ready For Sale



1V4414

RICK WINTER JACKET

CONVOY

Material: Pro Outdoor 235

Colour: Convooy

Size range: 42-66

Product description:

Men's winter coat with wadding and lining. New improved fit (easy arm movement, wide back for comfortable fit). Stand up collar with warm fleece lining. Wind panel and zipper at front. Visible press buttons at front list. Inside pocket. Sleeve end with rib. 2 breast pockets with velcro fastening. D-ring loop for ID-cover underneath right breast pocket flap. Lower side pockets. Long hem to cover the back. Rubber band on the side of hem. 20mm reflective bands in shoulder part and sleeves.

Ready For Sale



1F0207

RICK WINTER JACKET

FLY/ NAVY

Material: Pro Outdoor 235

Colour: Navy / FLY

Size range: 42-66

Product description:

Winter coat with wadding and lining. Comfortable fit and easy arm movement. Stand up collar with warm fleece lining. Wind panel and zipper at front. Hidden press buttons at front list. Inside pocket. Sleeve end with rib. Breast pockets with velcro fastening. D-ring loop for ID-cover underneath right breast pocket flap. Lower side pockets with velcro. Long hem to cover the back. Rubber band on the side of hem. 50mm reflective bands at sleeves and at bottom.

Ready For Sale



1V4678

CE WADE WINTER COAT

Material: Pro Outdoor 235

Colour: Navy

Size range: 42-66

Product description:

EN 342:2004, Protective clothing against cold.

Winter coat with stand collar. Enhanced wind lining attached to wadding. Fleece inside collar. Cover list on top of the zipper with hidden press buttons. Ribknit cuffs inside sleeve end, sleeve adjustment with velcro. 2 breast pockets - hidden press buttons at pocket flaps, pen pockets at both sides. Zipped breast pocket at left hand side. Large pockets with flap below waistline. Waist adjustments inside. D-ring loop underneath right breast pocket flap. Detachable ID-card pocket with velcro and press button at left hand sleeve.

Ready For Sale



1V1938

CE WADE WINTER COAT

CL2

Material: Pro Outdoor 235

Colour: FLO / Navy

Size range: 42-66

Product description:

EN ISO 20471:2013, High Visibility Clothing, class 2.

EN 342:2004, Protective clothing against cold.

High Visibility winter coat with stand collar. Enhanced wind lining attached to wadding. Fleece inside collar. Cover list on top of the zipper with hidden press buttons. Ribknit cuffs inside sleeve end, sleeve adjustment with velcro. 2 breast pockets - hidden press buttons at pocket flaps, pen pockets at both sides. Zipped breast pocket at left hand side. Large pockets with flap below waistline. Waist adjustments inside. D-ring loop underneath right breast pocket flap. Detachable ID-card pocket with velcro and press button at left hand sleeve.

Ready For Sale



1V2010 WARD WINTER HOOD

Material: Pro Outdoor 235

Colour: Navy

Size range: 42; 52; 60

Product description:

Detachable winter hood. Adjustable cord on edge of hood, tab with velcro on back for adjusting the hood.

Ready For Sale



41642

CODY WINTER BIB & BRACES

Material: Pro Outdoor 235

Colour: Navy

Size range: 40-66

Product description:

Men's bib & braces with wadding and lining. Zipper closure and windlist at center front. Adjustable braces with buckles. Adjustable elastic band at back waist. One back pocket with flap. One leg pocket with flap. Leg bottom with zipper opening on sides. 20mm reflective bands in leg.

Ready For Sale



18760

CODY WINTER BIB & BRACES

Material: Pro Outdoor 235

Colour: White

Size range: 42-66

Product description:

With insulation. Adjustable elastic braces with plastic fastening. Zipper and press buttons on front closure. Adjustable elastic band at back inside waist. Bottom side pockets. Straight leg end with zipper on side seam.

Ready For Sale



1V5068 WINTER BIB&BRACES BLACK/RED

Material: Pro Outdoor 235

Colour: Black/Red

Size range: 42-66

Product description:

Men's bib & braces with wadding and lining. Cover list on top of the zipper. Adjustable braces with buckles. Phone pocket on bib right side. Side pockets and 2 leg pockets. One back pocket. Zipper at both leg ends. 50 mm reflective bands on leg.

Ready For Sale



1V4679

CE FERGUS WINTER B&B

Material: Pro Outdoor 235

Colour: Navy

Size range: 42-66

Product description:

EN 342:2004, Protective clothing against cold.

Winter bib & braces. Cover list on top of the zipper. Narrow breast pocket at bib. Side pockets. 2-level inner pockets for kneepads. Waistband elastication at back waist. Zipper at both leg ends.

Ready For Sale



1V1935

WINTER B&B M CL2

Material: Pro Outdoor 235

Colour: Navy / FLO

Size range: 42-66

Product description:

EN ISO 20471:2013 High Visibility clothing, visibility class 2.

EN 342:2004 Protective clothing against cold.

High Visibility winter bib & braces. Cover list on top of the zipper.

Narrow breast pocket at bib. Flap pocket with hidden press buttons on left leg. 2-level inner pockets for kneepads. Waistband elastics at back waist. Zipper at both leg ends.

Ready For Sale



2803

KERRY SWEAT SHIRT M

Material: Sweater Knit 290

Colour: Navy, Black, Red, Grey melange, White

Size range: 2S-4L

Product description:

Unisex sweat shirt. Rounded neckline. Ribknit at neck, hem & cuffs. Top stitching at seams. Loose ribknit for better movement.



2096



1L3924



1L3925



2809

2803 & 2809 Best Seller. Ready For Sale

1741

KIP FLEECE JACKET M

Material: Fleece 250

Colour: Navy, Black, Red

Size range: 2S-4L

Product description:

Unisex fleece jacket. New fit, without lining and 2 pockets with zippers. Straight hemline and cuffs.



18444



17761

1741 and 18444 Best Seller. Ready For Sale

1V9807

KIP FLEECE JACKET M BR

YELLOW/NAVY

Material: Fleece 250

Colour: Navy / Bright Yellow

Size range: 2S-5L

Product description:

Unisex fleece jacket. 2 pockets with zippers. Straight hemline and cuffs.



1L1427

MARLON WADDED WAISTCOAT U

Material: Pro Twill 210

Colour: Black

Size range: XS-2L

Product description:

Wadded black waistcoat. Stand collar, front closure with zipper.

Ready For Sale



1L3761

MARLON WADDED WAISTCOAT U

Material: Pro Outdoor 235

Colour: Convoy

Size range: 4S-6L

Product description:

Wadded grey waistcoat with red piping on chest and back. Zipper closure and high stand-up collar with fleece. List pockets at sides. Curved hem at back.

Ready For Sale



1V2737

WAISTCOAT M

Material: Pro Outdoor 235

Colour: Navy / Sulphur

Size range: 4S-8L

Product description:

Wadded navy waistcoat with yellow piping on chest and back. Zipper closure and high stand-up collar with fleece lining. List pocket at left chest with zipper closure. List chets front sides without closure. ID card holder loop at right chest, ID card holder can be attached. Curved hem at back.

Ready For Sale



1V5495

MARLON WADDED WAISTCOAT M NAVY

Material: Pro Outdoor 235

Colour: Navy

Size range: 4S-6L

Product description:

Wadded navy waistcoat with zipper front closure. High stand-up collar with fleece lining. List pockets at sides. Curved hem at back.

Ready For Sale



1V9804

MARLON WADDED WAISTCOAT U NAVY/FLY

Material: Pro Outdoor 235

Colour: Navy / FLY

Size range: 4S-6L

Product description:

Wadded waistcoat. Body with curved hem, stitched shell. Zipper on front. 2 side pockets. Patch pocket on right side with pen compartments. 2 inside pockets with zipper closure. 50 mm reflective band.

Ready For Sale



1L1982 WADDED WAISTCOAT M NAVY

Material: Pro Twill 245

Colour: Navy

Size range: 3S-8L

Product description:

High stand up collar with zipper closure, chest pocket with flap and hidden press button, smaller flap with velcro fastening, side list pockets, side slits, horizontal stitchings.

Ready For Sale



Chemical Protective Collection

1L2844

B&B M CHEMICAL PROTECT

Material: 54 MAC, 44 CO, 2 CF, 320 g

Colour: Dark blue

Size range: 36-64

Product description:

Work bib and braces bicolour with red accent. Two wedge pockets. Three stitched-on pockets with safety flap -hidden press buttons. Fastening on the left side – hidden press buttons. Fly fastened with hidden press buttons braces with elastic, plastic buckles.



16102

TROUSERS M CHEMICAL PROTECT

Material: 54 MAC, 44 CO, 2 CF, 320 g

Colour: Dark blue

Size range: 42-62

Product description:

Men's trousers with a loose fit. Belt loops on waistband. Pockets on front, left pocket with contrast stripe. Slit with hidden press buttons. One back pocket with a flap and contrast stripe on flap. Thigh pocket on right side with a flap and contrast stripe on flap.



16101

JACKET M CHEMICAL PROTECT

Material: 54 MAC, 44 CO, 2 CF, 320 g

Colour: Dark blue

Size range: S-2L

Product description:

Men's jacket with collar. Pressbuttons on sleeve-ends. On chest pocket inside. Patch pockets on front with flaps. Contrast stripes on flaps. Hidden pressbuttons on front under the front list.



Hats
Caps
Belts

1V2805 GALE BEANIE

Material: Single Knit 170

Colour: Grey mel, black

Size range: S-L

Product description:

Beanie made of single jersey material with three sizes available.
Designed to keep your hair away from the face.

Ready For Sale



1V3983

KIRK CAP

Material: Pro Twill 210

Colour: Navy, Black

Size range: S, M, L

Product description:

Cap with visor and velcro adjustment.



1L4205



1L4206

15087 BELT BLACK FR

Material:

60 % MAC (Modacrylic)- 40 % CO

Buckle 100 % PA (Polyamide)

Colour: Black

Size: 100 cm, 130 cm, 160 cm

Product description:

Fire resistant elastic black belt.

WWS Sales products- not for rental.

