



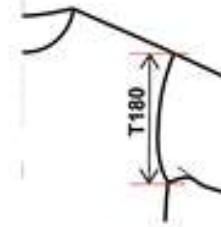
T171

Shoulder seam length

Measure shoulder seam length from neck point to sleeve seam. Garment is flat on table.

*Noora Alarauhio*

27.02.2014



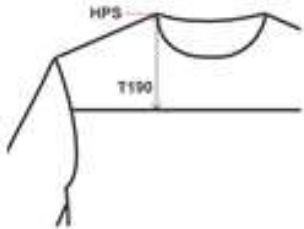
T180

Armhole height (front)

Measure armhole height vertically shoulder point down tounder arm seam. Garment is flat on table

*Noora Alarauhio*

27.02.2014



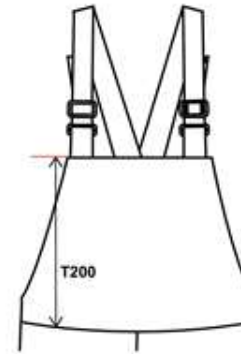
T190

Front yoke height from HPS

Measure yoke height vertically from highest point of shoulder (HPS) to yoke seam in front. Garment is flat on table.

*Noora Alarauhio*

27.02.2014



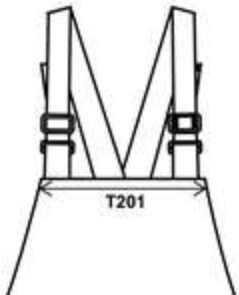
T200

Bib length

Measure bib length from top edge vertically down to waist seam in front. Garment is flat on table.

*Miia Laalahti*

28.02.2014



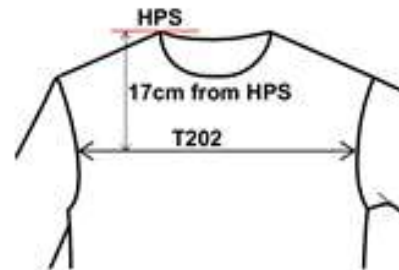
T201

Bib width

Measure bib width across top of bib edge to edge. Garment is flat on table.

*Noora Alarauhio*

27.02.2014



T202

Across front

Measure 17cm vertically down from highest point of shoulder(HPS). Measure across front from armhole seam to armhole seam. Garment is flat on table.

*Noora Alarauhio*

27.02.2014