

1 Introduction

This guide is for purchase order label and position in different product types. Purchase order label should be in visible place or easy to check when product is folded in stock. Order lots are possible to track in laundries if necessary.

1.1 Purchase order –label position

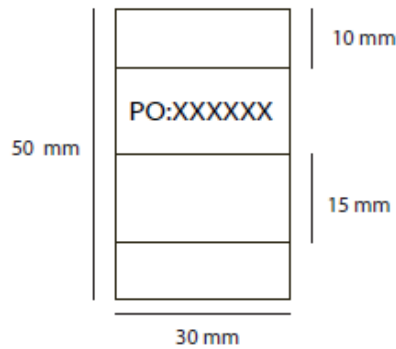
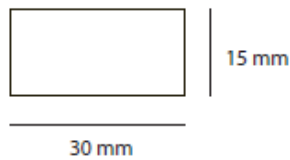
Purchase order label should be placed to every product that order lots are possible to track in laundries. There is e.g. purchase label on below.

Purchase order number print:

PO:XXXXXX

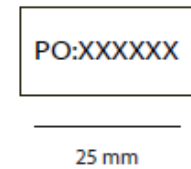
LABEL mmts

- folded
- printed purchase order number



PRINT COLOUR
BLACK
Pantone PMS Black C

Print size



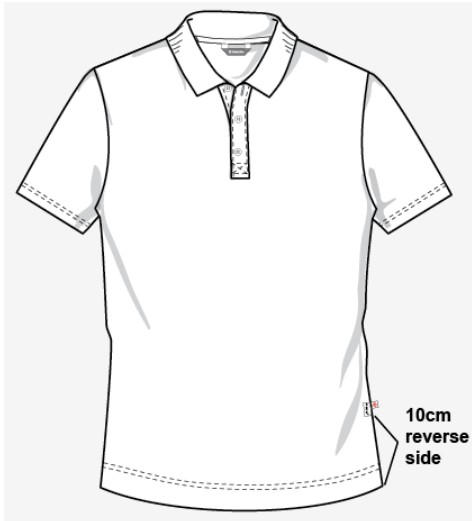
2 Jackets, coats, shirts, overalls, waistcoats, dungarees

Purchase order label is placed to reverse side to collar seam on the left side, beside hang loop.



3 T-shirts, polo shirts, sweaters

Purchase order label is placed to reverse side to left side seam, 10cm from hem.

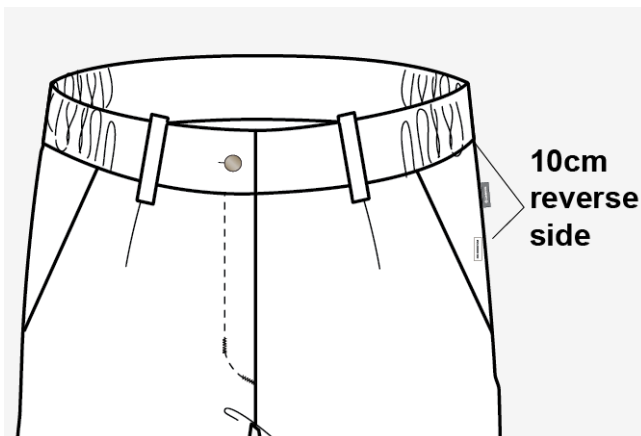


If not side seams, then label is placed to the middle of neck seam.



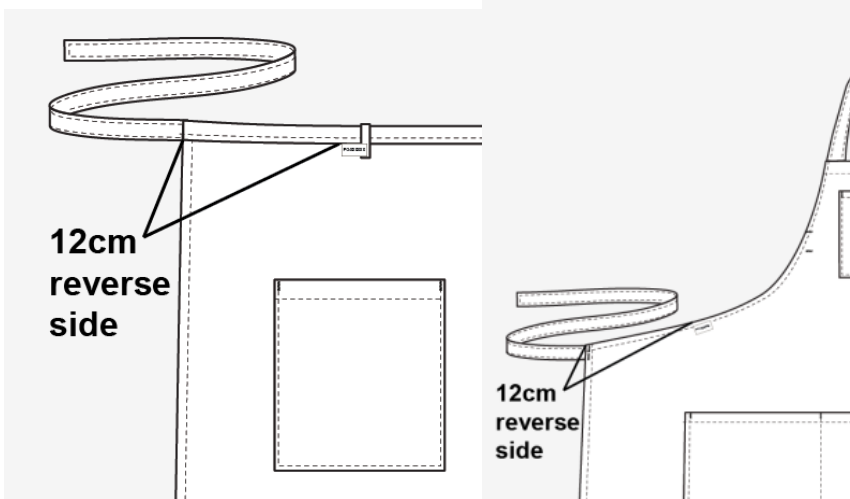
4 Trousers, skirts

Purchase order label is placed to reverse side to left side seam, 10cm from waistband seam.



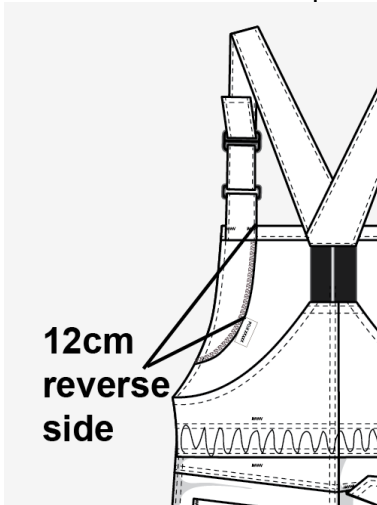
5 Aprons

Purchase order label is placed to reverse side to right side of apron, 12cm from side edge of waistband.



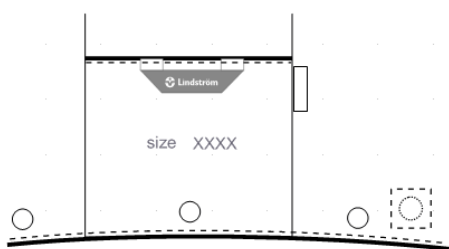
6 Bib & Braces

Purchase order label is placed to reverse side to left side of front part, 12cm from top of front part.



7 Hoods

Purchase order label is placed to reverse side to left side of marking piece, near upper seam of marking piece.



8 Hats

Purchase order label is placed to reverse side under product code label.

